

BR 81

# Royal Navy and Royal Marines

## Uniform Regulations

*Revised 1984*

*Supersedes 1966 Edition*

September 1984

*Mike Whitmore.*

By Command of the Defence Council

MINISTRY OF DEFENCE  
DIRECTOR GENERAL OF SUPPLIES AND TRANSPORT (NAVAL)

D/ST 83/175/2/4

© Crown copyright 1984  
First published 1966  
Revised Edition 1984  
Printed in England for HMSO

Dd 737661 C00 9/84 E & S 37791

ISBN 0 11 772184 0

## Chapter 5

# Royal Marines Officers

### Articles

#### ORDERS OF DRESS AND OCCASIONS ON WHICH WORN

0501	Table of Dresses
0502	Dress when serving with RN or other Services
0503	Blue Working Dress
0504-0509	Spare

#### BADGES AND DISTINCTION MARKS OF RANK AND BRANCH

0510	Distinctions in uniform of senior officers
0511	Distinctions in uniform of band officers
0512	Cap/Beret badge
0513	Helmet Plate
0514	Collar Badge
0515	Corps Insignia
0516	Letters 'RM'
0517	Rank Badges
0518	Flying Badges
0519	Parachutist Badge
0520	King's Badge
0521	Prince's Badge
0522	Duke of Edinburgh's Medallion
0523	Royal Marines Commando Flash
0524	Royal Marines Band Service Flash
0525	Buttons
0526	Colour of Badges and Buttons
0527-0529	Spare

#### AIGUILLETES AND CYPHERS

0530	Aiguillettes
0531	Royal Cyphers
0532-0539	Spare

#### ROYAL MARINES RESERVE

0540	Royal Marines Reserve Officers' uniform
0541-0549	Spare

## Annexes

5A

## TABLES OF DRESSES

- 1 Temperate climates
- 2 Hot climates
- 3 Additional items of uniform which may be worn
- 4 Anodised, bronze or gilt buttons worn on uniform garments
- 5 Royal Marines General Officers – Guidance on points of Dress
- 6 Spare

5B

## SPECIAL DRESSES

- 1 Stone-coloured Service Dress
- 2 Spare

5C

## UNIFORM OUTFIT SCALES

- 1 RM officers entered for general service
- 2 RM Short Service Limited Commission Officers
- 3 RMR officers
- 4 Spare

## ORDERS OF DRESS AND OCCASIONS ON WHICH WORN

## 0501. Tables of Dress

1. Details are given in Annex 5A. Numbers are assigned to the Dresses for convenience when referring to them, and so far as practicable the titles and numbers correspond with the equivalent naval officers' Dresses. For the Orders of Dress to be worn at Court functions, or at Joint Services functions when members of the Royal Family are present, see Chapter 16, Joint Services Ceremonial Dress Table.

## 0502. Dress when serving with RN or other Services

1. Royal Marines Officers will conform when possible to the number of the Dress ordered for the Royal Navy. When serving with the other Services they are to wear the nearest appropriate Dress.

## 0503. Blue Working Dress

1. RM Young Officers under training in the Dartmouth Training Ship and RM officers associated with landing craft in Commando ships may wear blue, flame-resistant, cotton working dress shirts and trousers on appropriate occasions. These items will be provided on a loan basis when required, either by the Commando Training Centre, RM, or from ships' stocks. The scale is not to exceed two sets per entitled officer.

0504 – 0509. Spare

## BADGES AND DISTINCTION MARKS OF RANK AND BRANCH

## 0510. Distinctions in uniform of senior officers

1. GENERAL OFFICERS: Articles of uniform for General Officers are of Corps pattern with the following modifications:

- a. *Greatcoat.* Army pattern, Atholl grey. In Lovat Dress either a British Warm of Corps pattern greatcoat may be worn.
- b. *Tunic.* In No. 1 Dress on ceremonial occasions a blue tunic with stand-up collar (Army pattern No. 1) is worn. The accessories for wear with this Dress comprise – gold shoulder cords with silver-embroidered rank badges, crimson and gold waist sash, dress sword with metal scabbard, crimson and gold sword knot, gold sword slings, plain white gloves. All buttons  $\frac{3}{4}$ in.
- c. *Badges.* The same cap/beret badges and badges of rank as prescribed for Army General Officers. Letters 'RM' are not worn.
- d. *Gorget Patches.* Scarlet patches with gold oak leaf embroidery and small 'General Officers' button are worn with all orders of dress other than Combat Dress and Mess Dress as follows:
  - (1) Blue, lovat and stone-coloured tunics – Patches to be  $3\frac{1}{2}$ in long and  $1\frac{1}{4}$ in wide, triangular at the points and shaped to fit the collar.

- (2) Shirts – Similar in design to (1) but 2in long to the point and 1in wide. Worn horizontally on each side of the opening of the collar, point to the rear, the top of the patch being ½in from the top of the collar.
  - e. *Cap*. White-plastic-topped, Corps pattern but with gold-embroidered oak leaves all round the peak.
  - f. *Scarlet Mess Jacket*. Fitted with blue cloth shoulder straps edged with ½in oak-leaf pattern gold lace and fastened at point with small General Officers' button. Silver-embroidered rank badges on shoulder straps. Corps insignia (0515) on each lapel.
  - g. *White Mess Jacket*. Fitted with white drill shoulder straps fastened at point with small General Officer's button. Anodised rank badges on shoulder straps. Corps insignia as at f.
  - h. *Blue Trousers and Overalls*. Scarlet cloth stripe 2½in wide in place of ¼in welt.
2. **BRIGADIERS AND COLONELS**. Articles of uniform for Brigadiers and Colonels are of Corps pattern with the following modifications:
- a. *Greatcoat*. As for General Officers.
  - b. *Badges*. The same cap/beret badges and badges of rank as prescribed for Army Brigadiers and Colonels. Letters 'RM' are not worn.
  - c. *Gorget Patches*. As for General Officers, except that crimson gimp cord is used instead of gold oak-leaf embroidery and EIIR with Garter Emblem buttons instead of General Officers' buttons.
  - d. *Cap*. White-plastic-topped, Corps pattern but with gold-embroidered oak leaves round the front of the peak.
  - e. *Scarlet Mess Jacket*. As for General Officers, except that shoulder straps are edged with ½in, staff pattern, gold lace and fastened at point with small EIIR with Garter Emblem buttons.
  - f. *White Mess Jacket*. As for General Officers but with EIIR with Garter Emblem buttons for shoulder straps.
  - g. *Blue Trousers and Overalls*. Scarlet cloth stripe 1¾in wide in place of ¼in welt.
3. **COLONELS COMMANDANT AND HONORARY COLONELS**
- a. *Colonels Commandant*. On special occasions Colonels-Commandant of the Royal Marines may wear the uniform of their rank on retirement or the approved alternative, which is General Officers' uniform with Colonels' badges of rank.
  - b. *Honorary Colonels RMR*. On special occasions Honorary Colonels of the RMR may wear the uniform of their rank on retirement or the approved alternative which is Corps Uniform (i.e. uniform worn by Lieutenant-Colonels RM and below) with Colonels' badges of rank.

#### 0511. Distinctions in Uniform of Band Officers

1. Articles of uniform for officers of the RM Band Service are of Corps pattern with the following modifications:
- a. *Full Dress*. The following are worn with No. 1 Full Dress as appropriate (see Dress Table):  
Either:  
(1) Blue cloth tunic with stand-up collar (pre-war Full Dress pattern). The accessories for wear with this Dress comprise gold shoulder cords with silver-embroidered rank badges, crimson waist sash, dress sword with metal scabbard, gold sword knot and sword slings, plain white nylon gloves.  
Or  
(2) Blue frock coat with stand-up collar and crimson sash.
  - b. *Tropical Dress*. The following are worn with No. 5W Tropical Dress (see Dress Table):  
(1) White cloth tunic with stand-up collar, blue overalls. The accessories for wear with this Dress are as a(1).
  - c. *Helmet Badge*. Officers of CINCAVHOME and CDO Forces Bands wear the same special insignia on helmet badges (only) as other ranks of these bands (0613).
  - d. *Cape*. A blue cloth Admiralty Constabulary pattern cape, with turndown collar trimmed with gold lace, gilded metal lion head and chain neck fastening, scarlet lining, to button four is provided for wear on appropriate occasions as shown in the Dress Table.
  - e. *Blue Trousers and Overalls*. Scarlet cloth stripe 1¾in wide in place of ¼in welt. Overalls may be worn on all appropriate musical occasions.
  - f. *Royal Yacht*  
(1) White drill uniform is worn by Band officers in the Royal Yacht on appropriate occasions as for other band ranks (Annex 6B, Special Dresses 10).  
(2) Stone-coloured Shorts and Stockings are worn by Band Officers in the Royal Yacht on appropriate occasions as for other Band ranks (Annex, 6B, Special Dresses 10).

#### 0512. Cap/Beret Badge

1. The Corps badge is in two parts: a globe in a laurel wreath and a lion on a crown: the globe in silver, remainder anodised. The beret badge worn with Combat Dress (only) is similar but in bronze. The manner of wearing on cap and beret is as shown in 0612.3.
2. The Corps badge is worn by all officers below Colonel. The Army pattern badge is worn by Colonels and Brigadiers (lion and crown) and General Officers (crossed sword and baton in wreath surmounted by a crown).

#### 0513. Helmet Plate

1. Officers' pattern. Gilding metal eight-pointed star with dead and bright rays with crown above. On the star a gilding metal laurel wreath and saw-pierced garter with regimental motto *Per Mare Per Terram*; above the garter a scroll *Gibraltar* and below it an anchor; in the centre a silver globe; under the saw-pierced garter, blue enamel. The plate is to be worn with the bottom central ray fitted halfway over the leather band.

#### 0514. Collar Badge

1. Silver globe in anodised laurel wreath or the same badge in bronze. Worn centrally on the step of the collar of blue, lovat and stone-coloured tunics. Worn in miniature on each lapel of the mess jacket, both scarlet and white, with the centre of the badge  $7\frac{3}{4}$ in below the neck point of the shoulder seam, by officers below the rank of Colonel.

#### 0515. Corps Insignia

1. The Corps badge (globe, laurel, lion and crown), embroidered in gold, is worn by Colonels and above on each lapel of the mess jacket, both scarlet and white, with the centre of the globe 9in below the neck point of the shoulder seam.

#### 0516. Letters 'RM'

1. Block letters. Size  $\frac{1}{2}$ in. Worn in the centre of the shoulder straps below badges of rank and  $\frac{1}{2}$ in above the shoulder seam. Not worn on mess jackets, British Warm or Band officers' full-dress and frock coats or in any dress by Colonels and above.

#### 0517. Rank Badges

1. Rank badges are worn on shoulder straps, where fitted. On the mess jackets of officers below Colonel they are worn on both lapels,  $\frac{1}{4}$ in above the Corps badge.
2. The following type of rank badges will be worn in the order of dress shown:
  - a. *Bronze:* No 5 Lovat Dress  
No 5S Lovat Shirt Sleeve Order
  - b. *Black on Olive Drab Removable Sleeve:*  
No 5J Jersey Wool Heavy  
No 8 Military Training Dress  
No 11 Combat Dress  
No 8W Tropical Military Working Dress  
No 11W Tropical Combat Dress
  - c. *Anodised: Remaining orders of dress.* On the RM raincoat, anodised badges are worn on a removable sleeve in lovat shade.
3. The badges to be worn are: Second Lieutenant – 1 star; Lieutenant – 2 stars; Captain – 3 stars; Major – crown; Lieutenant Colonel – crown and 1 star; Colonel – crown and 2 stars; Brigadier – crown and 3 stars; Major General – crossed swords and baton, star above; Lieutenant General – crossed sword and baton, crown above; General – crossed sword and baton, crown and star above.
4. The devices, as in para. 2, are Army pattern. The sword and baton device reverse for right and left shoulders, with the point of the sword to the front in each case. The stars, crown and crossed-sword and baton are to be  $\frac{3}{8}$ in size, except on the mess jacket of officers below Colonel, where they are to be  $\frac{1}{2}$ in. The distance apart of the devices is to be  $\frac{1}{4}$ in.

#### 0518. Flying Badges

1. NAVAL PILOTS' AND OBSERVERS' BADGES. To be worn by entitled Royal Marines officers under the same conditions as naval officers (0320). The badges are worn as follows:  
On blue, lovat and stone-coloured tunics – The full-sized badge (gold embroidered on blue) is worn in central position  $\frac{1}{4}$ in above the top row of medal ribbons, or if no medal ribbons are worn,  $\frac{1}{4}$ in above the left breast pocket.

On mess jackets – The Observers' badge or miniature Pilots' badge is worn immediately below the Corps badge on the left lapel, miniature medals being lowered accordingly.

2. **ARMY PILOTS' BADGE.** To be worn by entitled Royal Marines officers who are qualified as Army Light Aircraft Pilots only. The badge is worn as follows:

On blue, lovat and stone-coloured tunics – silver embroidered wings with gold lion and crown on navy blue or black background in same position as Naval Pilots' badge.

On mess jackets – Silver embroidered wings with gold lion and crown on red background in same position as Naval Pilots' badge.

On Combat Dress – Light blue wings with gold lion and crown on black background in the same position as on blue, lovat stone-coloured tunics.

3. RM officers qualified as Light Aircraft Observers do not qualify for and will not wear the Army Observers' badge.

#### 0519. Parachutist Badge

1. The Army pattern parachutist badge, a parachute with wings, may be worn by officers who are qualified parachutists and are serving or have served in Airborne, Commando or Special Boats units. It is worn on the right arm, 2in below the shoulder seam, as follows:

On blue tunics – the full-sized badge in gold on blue.

On lovat tunics – a two-thirds size badge in gold on green.

On mess jackets – the miniature badge (length 2in, height  $\frac{3}{4}$ in) gold on scarlet.

On stone-coloured tunics and shirts – the full-sized badge in light blue on khaki drill.

#### 0520. King's Badge

1. As for WOs, NCOs and men (0618.4). To be worn by entitled officers on all orders of blue, lovat and stone-coloured dress on the left arm, 2in below the shoulder seam. A gold-on-scarlet badge may be worn in the same position on the scarlet mess jacket.

#### 0521. Prince's Badge

1. As for WOs, NCOs and men (0618.4). To be worn by entitled officers on all orders of blue, lovat, white and stone-coloured dress as for the King's Badge.

#### 0522. Duke of Edinburgh's Medallion

1. As for WOs, NCOs and men (0618.4).

#### 0523. Royal Marines Commando Flash

1. All RM officers who have completed the Commando Course are to wear the flash on both sleeves of the jersey wool heavy. The flash is to be sewn centrally with its upper edge touching the shoulder seams.

#### 0524. Royal Marines Band Service Flash

1. All RM officers in the RM Band Service are to wear the flash on both sleeves of the jersey wool heavy. The flash is to be sewn centrally with its upper edge touching the shoulder seams.

#### 0525. Buttons

1. A table giving details of the position, type and numbers of buttons worn on Officers' Uniform garments is included in Annex 5A.

a. *Corps button.* As for WOs, NCOs and men (0623).

b. *Lion and Crown button.* Raised round button with mounted lion and crown in silver. Worn on caps, mess jackets and mess waistcoats.

c. *EIIR with Garter Emblem button.* Raised round button with the cypher 'EIIR' in the garter emblem. Worn by Colonels and Brigadiers on gorget patches and the shoulder straps of mess jackets.

d. *General Officers' button.* Raised round button with the Royal Coat-of-Arms. Worn by General Officers on gorget patches and the shoulder straps of mess jackets.

2. **SIZES OF BUTTON.** Tunic and greatcoat foreparts 1 in pockets, cuffs and shoulder straps of tunics and greatcoats and forepart of mess jackets  $\frac{3}{4}$ in. Cap, mess waistcoat, gorget patches and shoulder straps of senior officers' mess jackets  $\frac{1}{2}$ in.

**0526. Colour of Badges and Buttons**

1. Except where otherwise stated the badges and buttons worn with blue and stone-coloured uniforms, greatcoats and mess Dresses are to be anodised and those worn with lovat and combat dresses are to be bronze.

**0527 – 0529. Spare**

**AIGUILLETES AND CYPHERS****0530. Aiguillettes**

1. Naval type aiguillettes are to be worn by the following Royal Marines officers in the same manner as prescribed for naval officers (0330) and with equivalent dresses:

- a. Aides-de-Camp to the Queen, Equerries and Extra Equerries to the Queen or to members of the Royal Family, and Aides-de-Camp to Governors General.
- b. Military assistants to CGRM; officers specifically appointed as Flag Lieutenant to the Personal Staff of officer of Flag rank or Commodore; or as ADC Military Assistant of Personal Staff Officer to an officer of Flag General or Air Rank where the post is allowed by establishment; or as ADC to a Governor or Lieutenant Governor.

2. Officers at 1a wear aiguillettes as for Aides-de-Camp to the Queen ('Palace' type) and those at b as for Flag Lieutenants ('Staff' type).

3. Aiguillette shoulder straps are not to be worn by Royal Marines officers. In Mess Dresses, for officers below the rank of Colonel, the aiguillette is to be supported by a scarlet cloth shoulder strap of the same material as the jacket. In other Dresses the shoulder strap of the garment is to be used, modified by the addition of a button to which the aiguillette cord is affixed.

**0531. Royal Cyphers**

1. Royal Marines Aides-de-Camp to the Queen and Equerries and Extra Equerries to the Queen are to wear the royal cypher and crown, in one piece, below their badges of rank; letters 'RM' are not worn. Equerries to other members of the Royal Family wear the cypher of that member in the same manner. In Mess Dresses Equerries and Extra Equerries wear the royal cypher and crown on shoulder straps of self material.

2. The full-sized badge, in either dull silver metal or gilt metal, is worn as follows:

On full dress tunic, blue serge tunic, Atholl grey greatcoat, blue greatcoat, scarlet mess jacket and white mess jacket – dull silver.

On lovat tunic, stone-coloured bush jacket, stone-coloured shirt (in tropical dress) and British Warm – gilt.

3. Ex-Aides-de-Camp to the Queen wear the badge similarly but in miniature. Aides-de-Camp to the Queen who vacate the appointment on promotion to the substantive rank of Major General are, however, to cease wearing the badge.

**0532 – 0539. Spare**

**0540. Royal Marines Reserve Officers' Uniform**

1. Royal Marines Reserve officers wear the same uniform as regular RM officers except that:

- a. Woven letters 'R' embroidered red on blue are worn immediately below the shoulder flashes lettered 'Royal Marines Commando' on the jersey, wool, heavy.
- b. Letters 'RMR' are worn instead of 'RM'.

**0541 – 0549. Spare**

## Annex 5A

# Table of Dresses

(RN equivalent in brackets)

### 1. TEMPERATE CLIMATES

DRESS	DESCRIPTION	OCCASIONS FOR WEAR	Notes
No. 1 Full Dress No. 1 Full Dress	GENERAL OFFICERS Cap Army pattern tunic Overalls Wellington boots and spurs Gold shoulder cords Crimson and gold waist sash Ceremonial sword and sling White nylon gloves	Major inter-Service ceremonial, when Flag Officers wear ceremonial day coats and the Army wears No. 1 Dress (Ceremonial) and on appropriate occasions within the Corps	a. On certain occasions for indoor ceremonies at which the sword would be an encumbrance, No. 1 Dress may be ordered without sword. On such occasions the sword belt should continue to be worn, with the slings hooked together. b. Greatcoats worn when ordered. c. RM blue tunic worn instead of Army pattern tunic when appropriate.
	BAND OFFICERS White helmet Full Dress cloth tunic Overalls Wellington boots and spurs Crimson waist sash Full Dress sword belt and knot Sword with steel scabbard White nylon gloves	Ceremonial parades	a. Band officers to wear the blue cloth cape on parade with bands on appropriate occasions and, when ordered, the frock coat, sash and cap in place of the cloth tunic and white helmet.
	OTHER OFFICERS Cap Blue RM tunic Sam Browne belt Blue lanyard Brown cape gloves White shirt and collar	Ceremonial parades Occasions of duty and ceremony when No. 4 Dress is not sufficient	a. White helmet when ordered. b. Infantry sword and leather scabbard worn on parade with troops carrying sidearms and on other occasions when ordered.

(continued overleaf)



DRESS	DESCRIPTION	OCCASIONS FOR WEAR	Notes
	<p>Black tie</p> <p><i>Majors and above:</i> Overalls Wellington boots and spurs</p> <p><i>Captains and below:</i> Blue trousers Boots (officer pattern)</p> <p>Orders, Decorations and Medals (all officers)</p> <p>Broad riband Up to 4 stars of Orders Up to 2 neck decorations Medals</p>		<p>c. Blue cloth belt worn when ordered.</p> <p>d. Greatcoats worn when ordered.</p> <p>e. Adjutants, Equerries, MAs, ADCs, and Flag Lieutenants may wear overalls, Wellington boots and spurs.</p>
No. 2 Mess Dress (No. 2 Ball Dress)	<p>Cap Scarlet mess jacket Blue mess waistcoat Stiff-fronted evening shirt Winged collar Black evening tie</p> <p><i>Majors and above:</i> Overalls Wellington boots and spurs</p> <p><i>Captains and below:</i> Blue trousers Black shoes or Wellington boots</p> <p>Orders, Decorations and Medals (all officers)</p> <p>Broad riband Up to 4 stars of Orders One neck decoration Miniature medals</p>	Official and public balls, dinners and evening receptions of a formal nature	<p>a. Adjutants, Equerries, MAs, ADCs, and Flag Lieutenants may wear overalls, Wellington boots and spurs.</p> <p>b. The civilian equivalent is evening dress with decorations.</p> <p>c. Soft-fronted, collar-attached, evening shirt worn when ordered.</p> <p>d. Stars and decorations may be omitted when ordered.</p>
No. 4 Blue Service Dress  (No. 4 Blue Dress)  (No. 5 Undress)	<p>Cap Blue RM tunic Blue trousers Boots (officer pattern) Sam Browne belt Blue lanyard Brown cape gloves White shirt and collar Black tie</p> <p>Up to 2 stars of Orders One neck decoration Medals</p>	<p>Inspection by senior officers Investitures Funerals (unless regarded as state occasions) Memorial services Courts martial Social occasions in uniform Occasions of duty and ceremony when No. 5 Dress is not sufficient. Joint Services functions and launchings when RN officers wear No. 5 Dress Formal calls on HM ships</p>	<p>a. Blue cloth belt to be worn when ordered.</p> <p>b. Stars, decorations and medals may be omitted when ordered and are not to be worn for Investitures.</p> <p>c. Infantry sword and leather scabbard worn when on parade with troops carrying side-arms, at courts martial and on other occasions as ordered.</p>
No. 5 Lovat Service Dress  (No. 5 Undress)	<p>Beret (anodised badge) Lovat tunic Lovat trousers Black shoes Cloth belt Blue lanyard</p>	<p>Ordinary occasions of duty and ceremony ashore and afloat when No. 5S and No. 5J Dress is not sufficient Informal visits to HM ships Courts martial on</p>	<p>a. Band officers to wear the cap on appropriate occasions with bands.</p> <p>b. Boots (officer pattern) worn when on parade with troops.</p>

(continued overleaf)

ROYAL MARINES OFFICERS

Annex 5A continued

DRESS	DESCRIPTION	OCCASIONS FOR WEAR	Notes
No. 5 Lovat Service Dress (No. 5 Undress) (cont'd)	Coloured lanyard (in addition) for officers of Commando units Stone-coloured shirt Light khaki braided tie Medal ribbons	appropriate occasions when ordered by Group Commanders	c. Sam Browne belt worn on appropriate occasions. d. Infantry sword and leather scabbard worn when on parade with troops carrying side-arms, at courts martial or on other occasions as ordered. e. When swords are worn brown cape gloves and medals are also worn.
No. 5J Lovat with Jersey Wool Heavy  (No. 5J Day Undress Jersey)	Beret (anodised badge) Stone-coloured shirt Jersey, wool heavy Lovat trousers Black shoes	Routine duties in place of No. 5 Dress	a. Boots (officer pattern) worn when on parade with troops.
No. 5S Lovat shirt  (No. 12 Shirt Sleeve Undress)	Beret (anodised badge) Stone-coloured shirt Lovat trousers Black shoes Blue lanyard Coloured lanyard (in addition) for officers of Commando units Corps pattern belt Bronze rank badges	Routine duties during warm weather in place of No. 5J Dress	a. Collar to be worn open and sleeves rolled up. b. Boots (officer pattern) worn when on parade with troops.
No. 7 Mess Undress  (No. 7 Mess Undress)	Cap Scarlet mess jacket Blue mess waistcoat Blue trousers Soft-fronted, collar-attached, evening shirt Black evening tie Black shoes or Wellington boots  Miniature medals	Ordinary evening wear ashore and afloat. Dinner in harbour at the table of Flag Officers, Commodores and officers of corresponding rank unless No. 2 Dress is ordered	a. The civilian equivalent is dinner jacket (without decorations).
No. 8 Military Training Dress  (No. 8 Working Dress)	Beret (bronze badge) Combat shirt Lightweight green trousers Jersey, wool heavy Combat high boots Corps pattern belt Slip-on rank badges	Training Dress	a. May be worn without Jersey, wool, heavy in hot weather.

(continued overleaf)

DRESS	DESCRIPTION	OCCASIONS FOR WEAR	Notes
No. 11 Combat Dress  (No. 11 Combat Dress)	Beret, (bronze badge) Combat jacket Combat trousers Combat shirt Combat high boots Slip-on rank badges	For operations and on appropriate occasions of instruction or military training in temperate climates.	a. Steel helmet or hood worn as ordered. b. Associated items of combat clothing and web equipment worn as ordered. c. Jersey, wool, heavy may be worn when ordered.
<b>2. HOT CLIMATES</b>			
DRESS	DESCRIPTION	OCCASIONS FOR WEAR	Notes
No. 2W White Mess Dress  (No. 2W White Ball Dress)	Cap White mess jacket White mess waistcoat Stiff-fronted evening shirt Winged collar Black evening tie <i>Majors and above:</i> Overalls Wellington boots and spurs <i>Captains and below:</i> Blue trousers Black shoes or Wellington boots  Orders, Decorations and Medals (all officers) Broad riband Up to 4 stars of Orders One neck decoration Miniature medals	As for No. 2 Dress	a. Soft-fronted, collar-attached, evening shirt worn as ordered without white waistcoat. b. The civilian equivalent is evening dress with decorations. c. Adjutants, Equeiries, MAs, ADCs, and Flag Lieutenants may wear overalls, Wellington boots and spurs.  d. Stars and decorations may be omitted when ordered.
No. 5W Tropical Dress  (No. 5W White Undress) (No. 4W White Dress) (No. 1W White Full Dress) (No. 9W Tropical Dress) (No. 12W Tropical White Long Dress with Bush Jacket)	<i>Officers</i> Beret (anodised badge) Stone-coloured bush jacket Stone-coloured trousers Black shoes Blue lanyard Coloured lanyard (in addition) for officers of Commando units. <i>Medal ribbons</i> Anodised rank badges <i>Band Officers</i> White helmet White cloth tunic Overalls Wellington boots Crimson waist sash Full Dress sword belt and gold knot Sword with steel scabbard White gloves Anodised rank badges	As for Nos. 1, 4 and 5 Dress          As for Nos. 1 and 4 Dress	a. Sam Browne belt worn on appropriate occasions. b. Infantry sword and leather scabbard worn when on parade with troops carrying side-arms, or courts martial and other occasions as ordered. c. Boots (officer pattern) worn when on parade with troops. d. When swords are worn, brown cape gloves and medals are also worn. e. Band officers wear caps on appropriate occasions with bands.

**ROYAL MARINES OFFICERS**

*Annex 5A continued*

DRESS	DESCRIPTION	OCCASIONS FOR WEAR	Notes
No. 6W Stone- Coloured Shirt Sleeve  (No. 12W Tropical White Long Dress)	Beret (anodised badge) Stone-coloured shirt Stone-coloured trousers Corps pattern belt Boots or black shoes Blue lanyard Coloured lanyard (in addition) for Commando units Anodised rank badges	When ordered	
No. 7W White Mess Undress  (No. 7W White Mess Undress)	Cap White mess jacket Scarlet cummerbund Blue trousers Soft-fronted, collar- attached, evening shirt Black evening tie Black shoes or Wellington boots Miniature medals	As for No. 7 Dress	a. The civilian equivalent is dinner jacket (without decorations).
No. 8W Tropical Military Working Dress	Beret (bronze badge) Stone-coloured shirt Lightweight, green trousers Combat high boots Slip-on-rank badges	Working parties	Corps pattern belt worn when ordered.
No. 10W Red Sea Rig  (No. 10W Tropical Mess Undress)	Cap or beret (anodised badge) White tropical shirt Blue trousers Scarlet cummerbund Black shoes Anodised rank badges	Informal evening wear in hot climates in HM ships and naval establishments	
No. 11W Tropical Combat Dress	Beret (bronze badge) Combat shirt Lightweight green or tropical combat trousers Combat high boots Web belt Slip-on rank badges	For operations and on appropriate occasions of instruction or military training in hot climates	a. Tropical DPM combat smock may be worn when issued. b. Other web equipment to be worn as ordered. c. Steel helmet or hood worn when ordered.

**ARCTIC DRESS** (See Dress Tables for WOs, NCOs and men)

**SPECIAL DRESS**

The prestige stone-coloured uniform (No. 4W Stone-coloured Service Dress) is worn only:

- a. In NATO appointments
- b. In North American appointments (including Canada).
- c. Other prestige appointments as designated by Commandant-General Royal Marines.

DRESS	DESCRIPTION	OCCASIONS FOR WEAR	Notes
No. 4W Stone- coloured Service Dress	Cap Stone-coloured tunic Stone-coloured trousers Stone-coloured shirt Light khaki braided tie Blue lanyard Sam Browne belt Boots (officer pattern) Anodised rank badges Broad riband Up to 4 stars of Orders Up to 2 neck decorations Medals	As for No. 1 Full Dress and No. 4 Blue Service Dress	<ol style="list-style-type: none"> <li>a. White helmet worn when ordered.</li> <li>b. Infantry sword and leather scabbard worn when on parade with troops carrying side-arms, at courts martial and on other occasions as ordered.</li> <li>c. Stars, decorations and medals may be omitted when ordered and are not to be worn for Investitures. On occasions where No. 4 Blue Service Dress would be appropriate Broad riband is omitted and stars of Orders are limited to 2.</li> <li>d. Stone-coloured cloth belt worn when Sam Browne belt is removed.</li> <li>e. When swords are worn brown cape gloves are also worn.</li> </ol>

**3. ADDITIONAL ITEMS OF UNIFORM WHICH MAY BE WORN**

1. **Boat cloak.** May be worn optionally with all orders of evening dress.
2. **Breeches, field boots and spurs.** Officers appointed as Adjutant at the Commando Training Centre are to wear breeches, field boots and spurs with Blue and Lovat Dress on appropriate occasions.
3. **Gloves.** Brown cape gloves are to be worn as follows (except where white gloves are specified in the Dress Table):
  - a. In UK always with swords.
  - b. In UK from 1 October to 30 April in all orders of ceremonial and drill. Gloves may be worn in working dress as required.
  - c. On foreign stations in accordance with local orders.
4. **Greatcoat, Atholl grey.** Worn by Colonels and above. See 'Details of Uniform', Chapter 15.
5. **Greatcoat, British Warm and RM raincoat.** To be worn as ordered or appropriate. Greatcoats will be made available on loan as required. British Warm may be worn instead of greatcoat or RM raincoat with Lovat dress on appropriate occasions by all officers.
6. **Side hat.** May be worn optionally with Mess Dresses by all officers.
7. **Sword, sword belts, scabbards and knots.** Officers not in possession of sword, scabbard and knot are not required to provide them. They will be issued on loan, when required, from loan pools held at various RM establishments.

TABLE OF DRESSES

Annex 5A continued

**4. ANODISED, BRONZE OR GILT BUTTONS WORN ON UNIFORM GARMENTS**

GARMENT	POSITION	Corps pattern		Lion and Crown		Gen. Offs.	EIIR Grtr. Ass.
		1in	¾in	¾in	½in	½in	½in
Band cape	Forepart	3	—	—	—	—	—
Boat cloak	Forepart	4	—	—	—	—	—
Cap	Chin strap	—	—	—	2	—	—
Frockcoat, Band officers	Forepart	12	—	—	—	—	—
	Shoulder straps (2)	—	2	—	—	—	—
	Cuff slashes (2)	—	6	—	—	—	—
	Back vent slashes (2)	6	—	—	—	—	—
Gorget Patches	One for each	—	—	—	—	2 or 2	—
Greatcoat, Atholl grey	Forepart	12	—	—	—	—	—
	Shoulder straps(2)	—	2	—	—	—	—
Greatcoat, RM officers, khaki	Forepart	8	—	—	—	—	—
	Shoulder straps (2)	—	2	—	—	—	—
	Belt, back waist	3	—	—	—	—	—
	Back vent	—	—	—	—	—	—
Jacket, mess scarlet	Forepart	—	—	4	—	—	—
	Shoulder straps (2) (senior officers)	—	—	—	—	2 or 2	—
Jacket, mess white	Forepart	—	—	4	—	—	—
	Shoulder straps (2) (senior officers)	—	—	—	—	2 or 2	—
Tunic, General Officers, Army pattern	Forepart	—	5	—	—	—	—
	Breast pockets (2)	—	2	—	—	—	—
	Shoulder straps (2)	—	2	—	—	—	—
	Cuffs (2)	—	4	—	—	—	—
Tunic, blue RM	Forepart	4	—	—	—	—	—
	Breast pockets (2)	—	2	—	—	—	—
	Hip pockets(2)	—	2	—	—	—	—
	Shoulder straps (2)	—	2	—	—	—	—
	Cuffs (2)	—	4	—	—	—	—
Tunic, ceremonial Band Officers	Forepart	9	—	—	—	—	—
	Shoulder straps (2)	—	2	—	—	—	—
	Cuff slashes (2)	6	—	—	—	—	—
	Skirt	6	—	—	—	—	—
Tunic, lovat	Forepart	4	—	—	—	—	—
	Breast pockets (2)	—	2	—	—	—	—
	Hip pockets (2)	—	2	—	—	—	—
	Shoulder straps (2)	—	2	—	—	—	—
	Cuffs (2)	—	4	—	—	—	—

## 5. ROYAL MARINES GENERAL OFFICERS – GUIDANCE ON POINTS OF DRESS

### No. 1 Full Dress

1. **Shoulder cords.** Plaited, gold, shoulder cords with silver-embroidered rank badges are worn in pairs (left and right), with the point of the sword to the front. A pair of small metal adaptors is issued with the shoulder cords. These are screwed into the socket of the shoulder button to form an extension piece of sufficient length to enable the shoulder button to be secured through the shoulder cord.

2. **Belt, sword, waist, web with shoulder suspender.** The web waist belt is worn outside the overalls and under the jacket. The shoulder suspender is worn over the right shoulder and should be adjusted sufficiently to withstand any tendency for the left side of the waist belt to be dragged down by the weight of the sword.

3. **Sling, sword, gold lace on crimson leather.** Provided in sets of one short sling and one long sling. The front short sling is fastened by the square end to the brass dee on the waist belt at the left hip, the pointed end is fastened to the upper ring of the sword scabbard. The rear long sling is fastened by the square end to the brass dee in the centre of the back waist belt and the pointed end is fastened to the lower ring of the sword scabbard. The following points should also be noted:

- a. Sword slings are worn under the full dress tunic.
- b. The long sling should emerge from below the centre of the back of the jacket.
- c. The shoe of the scabbard should just touch the ground.
- d. The sword is carried by the hilt in the left hand with the shoe of the scabbard just trailing the ground to the rear. The sword is not carried by the scabbard.

4. **Knot, sword, gold and crimson with acorn.** Pass the double end through the metal eye in the pommel of the sword, from near to off when the sword is held in the correct position, then pass the acorn through the loop formed on the offside and pull the acorn down the full extent to the sword knot. Slide the runner up the double cords as high as possible and then fashion the sword knot into a figure of eight. The upper bight of the figure-of-eight should then be passed over the knob of the front tang (cross-bar) of the hilt to prevent undue movement. The acorn should then hang below the tang.

2.6 5. **Sash, waist, <sup>polyester</sup> silk, gold and crimson with two tassels.** Worn outside the jacket and fastened at the left hip. The tassels hang on the left side immediately in rear of the front (short) sword sling. The tassels should reach approximately 4in below the skirt of the jacket directly over the stripe of the overalls. The waist sash must be worn as tight as is comfortable.

6. **Atholl grey coat.** When Atholl grey coat is worn on ceremonial occasions by general officers the sword is trailed by the hilt which is brought forward through the front opening of the skirts. The left skirt is thrown back to permit this.

7. **Stiff white collar.** Is not worn inside the collar of the Full Dress Tunic.

### No. 2 Mess Dress

8. Neck Orders are to be worn on a miniature size ribbon around the neck, *over* the collar but *under* the tie. The ribbon is to be of such a length that the Order hangs immediately below the knot of the bow tie.

### No. 4 Blue Service Dress

9. Lanyards are worn in all orders of blue dress.

10. Neck Orders when worn are to be worn on the full width ribbon passing *under* the points of the white collar but *over* the tie, with the order hanging just below the knot.

## *Annex 5B*

# Special Dresses

1. **Stone-coloured Service Dress** (*see* Dress No. 4W in Annex 5A, Table of Dresses). This uniform, in the form specially prescribed for this purpose, is provided as a summer working uniform for certain officers appointed for service in NATO, North American and Canada and other prestige appointments listed in BR 96 Article 293, or as designated by CGRM.



## Annex 5C

# Uniform Outfits

### SCALE 1. RM OFFICERS ENTERED FOR GENERAL SERVICE

#### 1. Entitlement to Scale

- a. The uniform outfit shown at para. 2 is to be issued to all officers on first entry, or on promotion from ranks, except those entered on Short Service Limited Commission to whom Scale 2 is applicable.
- b. The outfit shown at para. 2 is that required to be maintained by RM commissioned officers generally. Additional items to be issued to RM Young Officers during initial training, but not required to be maintained, are listed in para. 3b.

#### 2. Basic outfit

<i>a. Items provided by means of cash grant</i>		Scale	Notes
Blue serge uniform suit (tunic and trousers)	} Made-to measure, complete with buttons and rank insignia	1	
Lovat suits (tunics and trousers)		2	
Scarlet, mess jacket		1	
Blue, mess waistcoat		1	
Boots, ankle, black, plain toe-cap		1 pr	
Cap, plastic, officers		1	
Stars, rank, anodised (for raincoat)		1 set	
Tie, khaki, light, braided		2	
Trunk, steel		1	
<i>b. Items issued from Service stocks</i>			
Badges: globe and laurel	} silver/anodised (for cap/beret) bronze (for beret - combat dress)	1	
lion and crown		1	
globe and laurel		1	
lion and crown		1	
Slip-on, shoulder rank badges:			
Black on green (for heavy wool jerseys and combat shirts)		1 pr	
DPM (for combat jackets)		1 pr	
Flashes:			
Royal Marines Commando, red on blue	} for heavy wool jerseys	2	(a)
Royal Marines Band Service, red on blue		2	(b)
Bag, travelling		1	
Belt, waist, Corps pattern		1	
Beret, RM (blue on first entry, green to be maintained in lieu when qualified)		1	
Collars, stiff		4	
Collars, winged		6	

(continued overleaf)

	Scale	Notes
Cummerbund, scarlet	1	
Discs, identity with cord	2	
Gloves, brown cape	1 pr	
Gloves, knitted, olive drab	1 pr	
Holdall	1	
Jersey, wool, heavy	1	
Knife, clasp	1	
Knife, fork and spoon set	1 set	
Lanyard AP (knife)	1	
Lanyard, blue (officers)	1	
Lanyard, coloured (when required)	1	
Mug, polypropylene, green	1	
<del>Pillow slips, cotton</del>	<del>4</del>	
Raincoat, RM with 2 plain slip-on, shoulder sleeves	1	
<del>Sheets, bed, cotton, single</del>	<del>4</del>	
Sam Browne belt, right brace and frog	1 set	
Shirts, combat	2	
Shirt, evening, stiff-fronted	1	
Shirts, evening, collar-attached	2	
Shirts, man's, tropical stone	3	
Shirts, white, soft, double cuff	2	
Shoes, black, leather with toe-cap	1 pr	
Socks, black	3 prs	
Socks, combat, olive drab	6 prs	
Tie, black, polyester/cotton	1	
Tie, evening, double-ended	1	
Trousers, polyester/cotton, green (denims)	2 prs	
Whistle, mouth	1	
c. <i>To be provided by officers</i>		
Braces	1 pr	
Towels, hand	3	
<b>3. Additional items for certain officers</b>		
a. <i>Qualified PT officers (on first appointment to full-time PT and sports duties:</i>		
Track suit (blouse and trousers), dark blue	1	
b. <i>Young officers on first joining RM Officers School, Lympstone (but not required to be maintained on completion of training):</i>		
Beret, blue	1	
Boots, Army pattern (uniform)	1 pr	
Jersey, sports, dark blue	1	
Jersey, sports, white	1	
Laces, nylon	1 pr	
Shoes, gymnasium	1 pr	
Shorts, sports, white	2 prs	
Stockings, nylon blue	2 prs	
Suit, lovat, worsted (readymade – Service supply)	1	
Sweater, white	1	
Vests, cotton, gymnasium, cadets, blue	2	
c. <i>Officers appointed as Adjutants at CTCRM Lympstone</i>		
Items provided by means of cash grant:		
Boots, field	1 pr	
Breeches, sand-coloured	2 prs	
Gloves, string, knitted, white	1 pr	
Spurs, hunting, AP	1 pr	
Trees, boot	1 pr	



## 7. Additional items for certain officers

Scale

Notes

## a. General Officers – Ceremonial accoutrements for No. 1 Dress

Gold shoulder cords	1 pr	
Waist sash, crimson and gold	1	
Dress sword with metal scabbard	1	
Sword knot, crimson and gold	1	
Sword slings, gold	2	
White, washleather, gloves	1 pr	

## b. Band Officer – No. 1 Dress

Frockcoat, blue with stand-up collar	1	
Waist sash, crimson	1	
Tunic, cloth, blue with stand-up collar (pre-war design)	1	
Cape, cloth blue	1	
Sword with metal scabbard	1	
Sword knot, gold	1	
Sword slings, gold	2	
White, washleather gloves	1 pr	

## Notes

(a) Issued when qualified (except Band officers).

(b) Issued to Band officers.

## SCALE 2. RM SHORT SERVICE LIMITED COMMISSION OFFICERS (SSLC)

1. The uniform outfit shown at para. 2 is to be issued to all officers on first entry. The outfit is based on that issued to a marine on joining less the blue uniform and with the addition of a small range of officers' items.

## 2. Basic outfit

Scale

Notes

## a. Items issued on personal loan

Badges: globe and laurel	} silver/anodised	1	
lion and crown		1	
globe and laurel	} bronze (for beret,	1	
lion and crown		1	
(Slip-on, shoulder rank badge, black on green for heavy wool jersey, combat shirts)			
Royal Marines Commando Flash, red on blue (for heavy wool jersey)		4	(a)
Badge, collar, bronze		2	
Letters 'RM', bronze		2	
Bag, travelling		1	
Belt, waist, Corps pattern		1	
Beret (blue on first entry, one green when qualified)		2	
Boots, combat, high c/w laces and insoles		1 pr	
Defenders, ear, gun defender		1 pr	
Gloves, brown, cape		1 pr	
Gloves, knitted, polyester, olive drab		1 pr	
Jersey, wool, heavy		1	
Jersey, sports		1	
Knife, clasp		1	
Knife, fork and spoon set		1 set	
Lanyard, AP		1	
Lanyard, blue		1	
Mug, polypropylene, green		1	
Pillow slips, ratings		2	
Raincoat, RM		1	

Annex 5C continued

SCALE 2 (continued)

	Scale	Notes
Sam Browne belt, right brace and frog	1 set	
Sheets, ratings	3	
Shirts, combat	2	
Shirts, man's tropical stone	3	
Shoes, black, leather, with toe-cap	1 pr	
Shoes, gymnasium	1 pr	
Shorts, sports, white	1 pr	
Socks, combat, olive drab	4 prs	
Stockings, nylon, blue	2 prs	
Suit, lovat, worsted (tunic and trousers)	1	
Tie, worsted, braid, drab	1	
Towels, hand, green	2	
Trousers, lovat	1 pr	
Type for marking clothes	1	
Liner for combat jacket	1	
Slip-on rank sleeve, DPM 2 Lt.	1 pr	
Vests, gymnasium, cadet, blue	2	
<i>b. To be provided by the officer:</i>		
Braces, elastic	1 pr	
Brush, clothes	1	
Brush, shoe cleaning	1	
Brush, shoe polishing	1	
Housewife, filled, mens'	1	
Pyjama suits	2	
Scissors	1 pr	
Towels, hand	2	
Trunks or drawers	3 prs	
Vests	3	

Notes:

- (a) Issued when qualified.
- (b) Rank stars, bronze and anodised for wear with suit, lovat, worsted and raincoat, RM and tie, officer pattern are issued on individual (temporary) loan from the loan pool.

SCALE 3. RMR OFFICERS

1. Basic outfit

	Scale	Notes
<i>a. Items provided by means of cash grant</i>		
Blue serge uniform suit (tunic and trousers) made-to-measure, complete with buttons, badges and rank insignia	1	
Lovat suit, other ranks pattern, plus cost of tailoring to officer pattern	1	
Cap, plastic, RM, officers	1	
Stars, anodised for raincoat	1 set	
Tie, khaki, light, braided	1	
<i>b. Items issued from Service sources</i>		
Badges: globe and laurel	1	} silver-anodised (for cap/beret)
lion and crown	1	
globe and laurel	1	} bronze (for beret with combat dress)
lion and crown	1	
globe and laurel, bronze, collar (for lovat) suit	2	
Slip-on shoulder rank badge:		
Black on green (for heavy, wool jersey and combat shirts)	1 pr	
DPM (for combat jackets)	1 pr	

(continued overleaf)

**SCALE 3 (continued)**

	<i>Scale</i>	<i>Notes</i>
Flash, 'Royal Marines Commando' } (for heavy, wool, jersey)	2	(a)
Letter 'R' }	2	
Letters 'RMR', bronze (for lovat suit)	2	
Beret, blue, RM	1	
Braces	1 pr	
Collars, stiff	4	
Defenders, ear, gun defender	1 pr	
Discs, identity, green } with cord	1	
Discs, identity, red }	1	
Gloves, brown, cape	1 pr	
Gloves, polyester, olive drab	1 pr	
Jersey, wool, heavy	1	
Knife, clasp	1	
Laces, for shoes	1 pr	
Lanyard, AP (for knife, clasp)	1	
Lanyard, blue	1	
Mug, polypropylene, green	1	
Raincoat, RM with 2 plain slip-on, shoulder sleeves	1	
Sam Browne belt, right brace and frog	1 set	
Shirts, combat	2	
Shirts, man's tropical stone	2	
Shirts, white, soft, double-cuff	2	
Shoes, black leather, with toe-cap	1 pr	
Socks, black	2 prs	
Socks, combat, olive drab	3 prs	
Tie, black	1	
Trousers, lightweight, polyester/cotton, green	1 pr	
Whistle, mouth	1	

**2. Additional items for certain officers**

- a. Items issued from Service sources on a once-only gratuitous issue to RMR officer cadets undergoing joint training with TAVR officer cadets*

Shorts, PT, blue	1 pr
Vests, cotton, gymnasium	2

**3. Personal loan items**

Boots, combat, high	1 pr
Drawers, olive drab, ankle length	1 pr
Headnet, insect (face veil)	1
Insoles, for boots, combat high	1 pr
Kit bag (green)	1
Liner, for combat jacket	1
Net, helmet, camouflage	1
Towels, hand, green	2
Trousers, lightweight, polyester/cotton, green	2 prs

**Notes**

- (a) Issued when qualified.  
 (b) Beret, green issued in lieu when qualified.  
 (c) Officers may optionally provide themselves with mess kit.

## Chapter 6

# Royal Marines Warrant Officers, Non-Commissioned Officers and Men

### *Articles*

#### **ORDERS OF DRESS AND OCCASIONS ON WHICH WORN**

0601	Table of Dresses
0602	Associated items of equipment
0603-0609	Spare

#### **BADGES AND DISTINCTION MARKS OF RANK AND BRANCH**

0610	Distinctions in uniform of Warrant Officers 1
0611	Distinctions in uniform of Band Service and Buglers
0612	Cap/Beret Badges
0613	White Helmet Ornaments
0614	Collar Badges
0615	Letters 'RM'
0616	Rank Badges
0617	Good Conduct Badges
0618	Branch, Specialist Qualification, Skill and Special Badges
0619	Stars and Crowns
0620	Badges awarded during former service in RN, Army or RAF
0621	Badges and buttons worn on various garments
0622	Background and attachment of badges
0623	Buttons
0624	Armlets
0625-0629	Spare

*(continued overleaf)*

0630  
0631-0639

## ROYAL MARINES RESERVE

Royal Marines Reserve Warrant Officers', NCOs' and Men's uniforms  
Spare

*Annexes*

6A

### TABLE OF DRESSES

- 1 Temperate climates
- 2 Hot climates
- 3 Arctic climates
- 4 Associated items of equipment
- 5 Additional items of uniform which may be worn
- 6 Badges and buttons to be worn with the various Dresses
- 7 Buttons worn on uniform garments
- 8 Spare

6B

### SPECIAL DRESSES

- 1 Despatch riders
- 2 Physical training instructors' working dress
- 3 Cooks' working dress
- 4 RM officers' attendants and officers' mess staff: Mess clothing
- 5 Grooms' working dress
- 6 Tradesmen's working dress
- 7 Drivers' working dress
- 8 Butchers' working dress
- 9 Printers' working dress
- 10 Royal Yacht uniform
- 11 RM Detachment, NP 1002, Diego Garcia, working dress
- 12 Functional clothing
- 13 Evening dress for WOs and SNCOs
- 14 Spare

6C

### KIT SCALES

- 1 RM WOs, NCOs and Mens' compulsory kits
- 2 RM WOs, NCOs and Mens' optional kit
- 3 Spare

6D

### GRATUITOUS ISSUE OF BADGES



## ORDERS OF DRESS AND OCCASIONS ON WHICH WORN

### 0601. Tables of Dresses

1. The Dress Tables, together with a list of additional items which may be worn are given in Annex 6A. Numbers are assigned to these Dresses for convenience when referring to them.
2. Details of certain special Dresses are given in Annex 6B.

### 0602. Associated items of equipment.

1. A table showing the associated items of equipment worn with various Dresses is given in Annex 6A.

### 0603 – 0609. Spare

### 0610. Distinctions in uniform – Warrant Officers 1

1. Articles of uniform for WOs 1 are of RM WOs, NCOs and mens' pattern with the following modifications:

- a. *Blue uniform* – Officers' material and pattern but with stand-up collar.
- b. *Cap, plastic, RM* – Officers' pattern.
- c. *Cap and collar badges* – Officers' pattern.
- d. *Blue lanyard* – Officers' pattern.
- e. *Boots, ankle* – Officers' pattern, i.e. with plain toe-caps.

2. In addition to the articles at para 1, WO1 Bandmasters are also entitled to the following articles of uniform:

- a. *Frock coat, blue with stand up collar.*
- b. *Waist sash, crimson.*
- c. *Sword knot, gold.*
- d. *Sword slings, gold.*
- e. *Sword with metal scabbard.*
- f. *Helmet plate* – Officers' pattern.
- g. *RM Band Cape, blue* – Officers' pattern.

### 0611. Distinctions in uniform—RM Band Service and Buglers

1. Articles of uniform for ranks of the RM Band Service and Buglers are of RM WOs, NCOs and mens' pattern with the following modifications:

- a. *Blue trousers* – RM Band ranks wear a broad scarlet stripe (1¾in) on serge trousers.
- b. *Band cape* – A blue cloth cape, fastening at the neck, is provided for wear by Band ranks with No. 1 Dress on appropriate occasions.
- c. *Ceremonial dress tunics:*
  - (1) A yellow-braided cloth tunic is provided for wear by Band ranks and Buglers with No. 1 Dress on appropriate occasions. For Band Sergeants and above the tunic is gold-braided. Drum Majors in complement billets are issued with a special, gold-braided ceremonial tunic.
  - (2) A white drill tunic is provided for wear by Band ranks and Buglers on appropriate occasions in hot climates (see No. 5W Dress in tables). Drum Majors in complement billets are issued with a special white ceremonial tunic.
- d. *Royal Yacht Band orchestral tunic.* In addition to the present full dress blue tunic, RM Band ranks of the Royal Yacht Band are provided with the pre-war Divisional Band full dress blue tunic for wear during orchestral engagements when embarked. These tunics are issued on loan from a small pool held at RM Eastney.
- e. *White equipment.* Band ranks and Buglers wear white buff equipment, as appropriate, instead of white plastic equipment.
- f. *Dress cords royal.* Silk for Bugle Majors, worsted for other Buglers are worn as ordered. The method of wearing is as follows:

The hook at the tassel end is to be secured to a becket sewn underneath the left shoulder strap at the front, as near to the point of the shoulder as practicable. The tassels, when secured, should lie naturally at the front of the left shoulder. The running end should then be taken across the upper chest over the right shoulder beneath the shoulder strap, the cord between the shoulders lying in a natural curve, being secured to the third button on blue ceremonial tunics; second button on the blue RM, white tropical ceremonial and white Royal Yacht tunics; and to the top button on stone-coloured and lovat tunics; between the two toggles provided. Securing of the cord is completed by bringing the

running end round the back of the right shoulder, under the armpit, and, except for the lovat tunic, securing the eye at the end to the top button of the tunic. On the lovat tunic the eye is to be secured to a small hook sewn under the right lapel 3½in above the top button. The plait below the eye should curve naturally towards the right armpit. If a drum carriage is worn, the loop across the chest should be underneath, and that part of the cord running from the right armpit, secured over the top of the carriage.

- g. *Wellington boots and overalls (Officers' pattern)* – may be worn by Drum Majors in Staff bands and by Drum Majors on ceremonial parades provided all Drum Majors present are dressed alike.

#### 0612. Cap Beret Badges

1. The globe, laurel, lion and crown badge, anodised or bronze as appropriate, is worn by all WOs, NCOs and men in one piece except as follows:

- Warrant Officers and equivalent ranks wear a divided badge, i.e. lion and crown separate from and above the globe and laurel (WOs1 wear Officers' pattern).
- On the *cap only*, ranks of the CINCPACFLT Band wear a gilt grenade on which is mounted the royal cypher GRV and a St. Edwards crown in silver surrounded by a laurel wreath. The royal cypher EIIR/PP with crown in silver is worn immediately above the grenade.
- On the *cap only*, ranks of the Commando Forces Band wear the anodised divided cap badge (as at a) with the Prince of Wales' plumes in silver between the globe and laurel and the lion and crown.

2. The composite badge is worn as follows:

- Caps* – centrally in front of the cap, with the top of the red band running through the crown.
- Berets* – immediately over the left eye: blue beret – centrally within and ½in above the bottom of the red patch; green beret – ½in above the leather band.

3. The divided badge is worn as follows:

- Caps* – with the tips of the wreath level with the top of the scarlet band and the crown ½in above the globe.
- Berets* – as in 2b but with the crown ¾in above the globe.

#### 0613. White helmet ornaments

1. In addition to a polished ball ornament and a polished or bright anodised chin chain, WOs, NCOs and men wear a polished or bright anodised helmet badge on the white Wolseley pattern helmet. The badge is an eight-pointed star with dead and bright rays and a crown above; on the star a laurel wreath on the inside of which is a garter with the regimental motto *Per Mare Per Terram*; above the garter a scroll *Gibraltar* and below it an anchor; in the centre a globe. The badge is to be worn centrally on the front of the helmet with the bottom central point fitted approximately halfway over the band round the helmet, so that the points either side rest on the top of the band.

2. The CINCPACFLT Band wear two royal cyphers in silver attached to the helmet badge; the cypher GRV over the anchor and below the globe and the cypher EIIR/PP below the crown.

3. The Commando Forces Band wear the Prince of Wales' plumes in silver centrally upon the helmet badge above the globe and partially covering the crown.

#### 0614. Collar badges

1. WOs, NCOs and men wear the metal or embroidered globe and laurel badge on blue and lovat uniforms. On blue tunics the badges are to be set ½in above the collar seam with the centre of the badge 2in from the end of the collar. On lovat tunics the badges are to be worn centrally on the step of the collar, the bottom of the laurel wreath ¼in above the edge of the step (WOs1 wear officers' pattern). Collar badges are not worn on other garments.

#### 0615. Letters 'RM'

1. Block letters, size ½in, anodised or bronze. Worn centrally on the shoulder straps ½in above the seam. Not worn on combat jackets, heavy wool jerseys, RM raincoats or Band and Buglers' full dress tunics.

#### 0616. Rank badges

Except for the khaki greatcoat where they are worn on both arms, and the RM raincoat where they are worn on detachable slip-on sleeves fitted over the shoulder straps, rank badges are worn on the right arm only as follows:

RANK	BADGE	HOW WORN
WO1	Royal Arms	Bottom point of badge $\frac{1}{4}$ in above point of slash on tunic sleeve or cuff on greatcoat. Bottom point of badge 4in above bottom of sleeve on jersey, wool, heavy, combat shirt, and combat jackets  In all shirt sleeve dresses the badge is worn on a wrist strap
WO2	Crown in laurel wreath	
WO2 (Bandmaster)	Lyre in laurel wreath, surmounted by crown. (But on greatcoat and wrist strap the WO2 crown in laurel wreath is worn.)	
WO2 (Bugler), Bugle Major, Drum Major.	Four chevrons, placed individually, point upwards, with bugle or drum, as appropriate. (But on jersey, wool, heavy and combat garments the general duties rank badges are worn.)	Inner angle of lowest chevron $\frac{1}{4}$ in above point of slash on tunic or cuff on greatcoat. Inner angle of lowest chevron 4in above bottom sleeve on jersey, wool, heavy, combat shirt, and combat jackets.
Provost Sergeant	Three chevrons, point upwards	In all shirt sleeve dresses the chevrons are worn on a wrist strap
Colour Sergeant	On blue uniform – three chevrons, point downwards, surmounted by a globe on crossed flags having a crown above and a fouled anchor below and surrounded by a laurel wreath. On other uniforms – three chevrons, point downwards, surmounted by a crown	Bottom point of lowest chevron $\frac{1}{4}$ in above cuff on greatcoat, $6\frac{1}{2}$ in below shoulder seams on heavy, wool jerseys, and combat shirts, $10\frac{1}{2}$ in below shoulder seam on all other garments
Sergeant	Three chevrons, point downwards	
Corporal	Two chevrons, point downwards	
Lance-Corporal	One chevron, point downwards	

**0617. Good Conduct Badges:**

1. V-shaped stripes,  $\frac{1}{2}$ in wide. White and khaki 5in across top. Worn point upwards on the left arm with the inner angle of the lowest stripe  $\frac{1}{4}$ in above the point of the sleeve slash on the blue serge, white (Royal Yacht) and stone-coloured tunics.

When more than one badge is worn the distance between them is to be  $\frac{3}{16}$ in measured perpendicularly.

*Continued on page 6-5*

2. Good conduct badges are only to be worn by Marines, Musicians and Buglers and then only on the blue serge, white (Royal Yacht) and stone-coloured tunics. They are not worn on the Band ranks' and Buglers' blue or white ceremonial tunics.

#### 0618. Branch, Specialist Qualification, Skill and Special Badges

CATEGORY	BADGE	HOW WORN
<b>1. Branch badges</b> Telecommunications technician Other Tradesmen RM Band Bugler	Circle with three lightning flashes each side. Crossed hammer and pincers. Lyre with oak leaves below. Embroidered drum.	a. WOs do not wear branch badges. b. Colour Sergeants – right arm, ¼in above point of slash. c. NCOs below Colour Sergeant – right arm, above the chevrons, fitted as close as possible into the 'V'. d. Marines, Musicians and Buglers – right arm, 6in below shoulder seam.
<b>2. Specialist Qualification badges</b> Assault Engineer Clerk Cook/Caterer Drill and Platoon Weapons Driver Heavy Weapons Landing Craft Mountain Leader Physical Training Provost Signaller Store Accountant Swimmer Canoeist	Letters AE in wreath Letter C in wreath Letter K in wreath Crossed rifles Steering wheel Letters HW in wreath Letters LC in wreath Letters ML in wreath Crossed clubs Letters MP in wreath Crossed flags Letters SA in wreath Letters SC in wreath	a. WOs do not wear SQ badges. b. Colour Sergeants – right arm, ¼in above point of slash. c. NCOs below Colour Sergeant with Instructor or 1st Class SQ badge – right arm, above the chevrons, fitted well into the 'V' (Lower end of crossed guns, etc. to be ¼in above backcloth of chevron.) PT Instructor's badge also worn centrally on chest of gymnasium vest and sweater. d. Other NCOs and Marines – left arm, ¼in above point of slash. e. Not more than one SQ badge is to be worn.
<b>3. Skill badges</b> Marksman Sniper	Crossed rifles Crossed rifles with letter S	Left arm, ¼in above point of slash unless an SQ badge is worn in this position, in which case the skill badge is worn ¼in above the SQ badge.
<b>4. Special badges</b> Pilot Unit Light Aircraft	The Army Pilots' Badge – wings extended, surmounted by a lion and crown.	The same badge as for officers (0518.2) worn in the same position, viz. ¼in above top row of medal ribbons or ¼in above left breast pocket if no medal ribbon worn.
Observer Unit Light Aircraft	Single wing of silver embroidery lifted to the right and attached to a gold 'O' surmounted by a crown.	As for Pilot Unit Light Aircraft viz. ¼in above top row of medal ribbons or ¼in above left breast pocket if no medal ribbons worn.
Airgunner Unit Light Aircraft	As for Observer but attached to a gold 'G'.	

Note. For additional stars and crowns see 0619.

CATEGORY	BADGE	HOW WORN
Parachutist Army: Parachute Jump Instructor King's Badge	Parachute with wings Parachute with wings. Letters APJI in wreath below. Royal cypher 'GR V' in a laurel wreath.	Right arm, 2½in below shoulder seam.
Prince's Badge	Royal cypher 'PP' in a lyre surmounted by a coronet.	Left arm, 2in below shoulder seam.
Section Leader's Diamond	Scarlet diamond	Left arm, 2in below shoulder seam, on blue and lovat uniform. Worn by recruits under training appointed Section Leaders.
RM Commando	Embroidered flash, lettered 'ROYAL MARINES COMMANDO', red on blue.	Both arms, 1in below shoulder seams. Worn on heavy, wool, jersey only.
RM Band	Embroidered flash, lettered 'ROYAL MARINES BAND SERVICE', red on blue.	
Duke of Edinburgh's Medallion	Designed in the form of a brooch depicting crossed rifles and sub- machine gun in a circular centre piece surrounded by a laurel wreath surmounted by a coronet, the whole 1.4in diameter.	Centrally on the pleat of the right breast pocket in blue, lovat and stone- coloured dresses, with the top of the coronet ¼in below the bottom of the pocket flap. Only to be worn on occasions when the Duke of Edinburgh visits RM units in his capacity as Captain-General, or, at the discretion of the Commanding Officer, on a purely Regimental parade when medals are worn.
Royal Yacht	Embroidered flash, lettered 'ROYAL YACHT' and surmounted by a crown.	Right arm, 1in below the shoulder seam. Worn by ranks embarked in the Royal Yacht and by the CINCNAVHOME Band.

#### 0619. Stars and Crowns

1. These are added to the basic specialist qualification badges shown in 0618.2 to indicate the classes of qualification as follows:

- Instructors – crown above basic device and two stars below
- First Class – crown above basic device
- Second Class – star above and star below basic device
- Third Class – star above basic device.

When there are both a letter and a star below the basic device, the letter is below the star.

#### 0620. Badges awarded during former service in RN, Army or RAF

1. These are not to be worn unless they are badges currently authorised for wear by RM WOs, NCOs and men; provided also that the privilege of wearing the badge has not been withdrawn.

#### 0621. Badges and buttons worn on various garments

1. A table specifying the badges and buttons worn on particular items of uniform is included in Annex 6A.

#### 0622. Background and attachment of badges

1. The instructions in 0415 as regards naval ratings' badges, are also applicable, as far as appropriate, to Royal Marines badges.

**0623. Buttons**

1. Corps button – raised round button, anodised or bronze. At the centre a fowl anchor under a crown surrounded by a double rim enclosing the words 'Royal Marines', and this in turn surrounded by a laurel wreath. In two sizes – 1in and 3/4in: the smaller button for pockets and shoulder straps. A table specifying the position, size and number of buttons worn on uniform garments is included in Annex 6A.

**0624. Armlets**

1. RM PROVOST. The 'MP' armband, as provided for the Royal Military Police to be worn immediately above the right elbow. When chevrons are worn on the upper arm, the arm band should just cover the lower point of the bottom chevron, with the letters 'M' and 'P' on either side of the apex of the chevron.

2. UNIT POLICE. Ranks on unit Police duties are to wear the authorised armlet – 'NP' 'RP' or 'RM' as appropriate – on the left sleeve immediately above the cuff of the tunic or greatcoat, or in a similar position on other uniform garments. The armlet is worn on the left wrist when long-sleeved garments are not worn.

0625 – 0629. Spare

**ROYAL MARINES RESERVE****0630. Royal Marines Reserve WOs, NCOs and men**

1 Royal Marines Reserve WOs, NCOs and men wear the same uniform as regular RM WOs, NCOs and men except that:

- a. Woven letters 'R', embroidered red on blue, are worn immediately below the shoulder flashes lettered 'Royal Marines Commando' on the jersey, wool heavy.
- b. Anodised or bronze letters 'RMR' are worn instead of 'RM'.

0631 – 0639. Spare

## Annex 6A

# Table of Dresses

### 1. TEMPERATE CLIMATES

DRESS	DESCRIPTION	OCCASIONS FOR WEAR	Notes
No. 1 Full Dress	<p><i>a. WO's, NCOs and men, Junior Musicians and Junior Buglers</i>            Cap            Blue RM tunic            Blue trousers            Boots A.P.            White plastic belt (White buff for Junior Musicians and Buglers)            White gloves            Scarlet sash (WO2s and SNCOs only)            Dress cords royal (Junior Buglers only)            Sword belt and brown gloves (WOs only)            Medals</p> <p><i>b. Band Service and Buglers on completion of training</i>            White helmet            Blue ceremonial tunic            Blue trousers            Boots NP            White buff belt            White gloves            Scarlet sash (WO2s and SNCOs only)            Dress cords royal (Buglers only)            Swords (Drum and Bugle Majors)</p>	<p>Major ceremonial parades.            Occasions of duty when No. 4 Dress is not sufficient</p>	<p><i>a. Army or naval pattern boots as ordered. (Ship's detachments only.)</i>  <i>b. White helmet worn when ordered.</i>  <i>c. Swords worn when ordered (WOs only).</i>  <i>d. Blue cloth belt worn when ordered.</i>  <i>e. Greatcoats worn when ordered.</i></p> <p><i>a. Band ranks to wear blue cloth cape when ordered.</i></p>

DRESS	DESCRIPTION	OCCASIONS FOR WEAR	Notes
No. 4 Blue Dress	Cap Blue RM tunic Blue trousers Boots White plastic belt (White buff for Band and Buglers) Scarlet sash (WO2s and SNCOs only) Dress cords royal (Buglers only) Sword belt and brown gloves (WOs only) Medal or medal ribbons as ordered	Ceremonial parades as an alternative to No. 1 Dress. Other formal occasions when specially ordered	<p><i>a.</i> Army or naval pattern boots as ordered. When not on parade black shoes may be worn at senior officer's discretion. Black socks to be worn when shoes ordered.</p> <p><i>b.</i> Band ranks to wear blue cloth cape when ordered.</p> <p><i>c.</i> Blue cloth belt worn when ordered.</p>
No. 5 Lovat Dress	Beret (anodised badge) Lovat tunic Lovat trousers Stone-coloured shirt Khaki tie Shoes, black leather Cloth belt Coloured lanyard (for Commando units only) Socks, combat GS Medal ribbons	Occasions of ceremonial as an alternative to Nos. 1 and 4 Dresses Sentries and other dutymen Normal occasions of walking out Courts martial on appropriate occasions when ordered by Group Commanders	<p><i>a.</i> White belt and gloves worn when ordered.</p> <p><i>b.</i> Army/Naval pattern boots worn when ordered.</p> <p><i>c.</i> Cap worn in place of beret by the Kings Squad, band ranks and buglers when ordered by Commanding Officers and for walking out by men not entitled to wear a green beret.</p> <p><i>d.</i> Scarlet sash worn by WO2s and SNCOs as appropriate and when ordered.</p> <p><i>e.</i> Dress cords royal worn by Buglers for ceremonial and appropriate occasions of duty, and when ordered and by Junior Buglers for walking out.</p> <p><i>f.</i> Brown sword belt worn by WOs when ordered.</p> <p><i>g.</i> Medals worn at Courts martial.</p>
No. 5J Lovat with Jersey Wool Heavy	Beret (anodised badge) Jersey, wool, heavy stone-coloured shirt Lovat or barrack dress trousers Black shoes	Routine duties in place of No. 5 Dress	<p><i>a.</i> Boots may be ordered when on parade.</p>



**ROYAL MARINES WARRANT OFFICERS, NON-COMMISSIONED OFFICERS AND MEN**

*Annex 6A continued*

<b>DRESS</b>	<b>DESCRIPTION</b>	<b>OCCASIONS FOR WEAR</b>	<b>Notes</b>
<b>No. 5S Lovat shirt sleeve order</b>	Beret (anodised badge) Stone-coloured shirt Lovat or barrack dress trousers Black shoes Coloured lanyard (Commando units only) Corps pattern belt Bronze 'RM' in epaulettes	Routine duties during warm weather in UK and on appropriate occasions abroad as ordered	<ul style="list-style-type: none"> <li><i>a.</i> Collar to be worn open and sleeves rolled up.</li> <li><i>b.</i> Army/Naval pattern boots as ordered.</li> <li><i>c.</i> White plastic belt (white buff for band ranks and buglers) worn when ordered.</li> <li><i>d.</i> Scarlet sash to be worn by WO2s and SNCOs as appropriate and ordered.</li> </ul>
<b>No. 7 Mess Dress (Optional)</b>	Cap Scarlet mess jacket Scarlet cummerbund Blue trousers Soft-fronted, collar-attached evening shirt Black evening tie Black shoes Miniature medals	Regimental mess dinners and other appropriate occasions as ordered	<ul style="list-style-type: none"> <li><i>a.</i> WOs and SNCOs only.</li> <li><i>b.</i> The civilian equivalent is dinner jacket.</li> <li><i>c.</i> A white mess jacket may be worn if ordered, during long periods of service in tropical areas.</li> </ul>
<b>No. 8 Military Working Dress</b>	Beret (bronze badge) Jersey, wool heavy Combat shirt Lightweight green trousers (denims) Combat high boot	Working parties	<ul style="list-style-type: none"> <li><i>a.</i> Web or Corps pattern belt may be ordered.</li> <li><i>b.</i> Green coveralls for technicians.</li> <li><i>c.</i> Blue, naval working dress, shirt and trousers (FR) and windproof working jacket for personnel in landing craft and ships detachments.</li> <li><i>d.</i> Jersey, wool, heavy may be omitted in hot weather.</li> <li><i>e.</i> Army pattern lanyard and clasp knife to be worn when ordered.</li> </ul>
<b>No. 11 Combat Dress</b>	Beret (bronze badge) Combat jacket Combat trousers Combat shirts Combat high boots	For operations and on appropriate occasions of instructions or military training in temperate climates.	<ul style="list-style-type: none"> <li><i>a.</i> Steel helmet or hood worn as ordered.</li> <li><i>b.</i> Associated items of combat clothing and web equipment worn as ordered.</li> <li><i>c.</i> Jersey, wool, heavy may be worn when ordered.</li> <li><i>d.</i> Lightweight, green trousers may be ordered for arduous training.</li> <li><i>e.</i> Tropical DPM combat smock may be ordered for instructors.</li> <li><i>f.</i> Army pattern lanyard and clasp knife to be worn when ordered.</li> </ul>

## 2. HOT CLIMATES

DRESS	DESCRIPTION	OCCASIONS FOR WEAR	Notes
No. 5W Tropical Dress	<i>RM Ranks</i> Beret (anodised badge) Stone-coloured tunic Stone-coloured trousers Boots AP Coloured lanyard (Commando units only) White plastic belt White gloves Scarlet sash (WO2s and SNCOs only) Sword belt and brown gloves (WOs only) Medals Anodised letters 'RM'  <i>RM Band Ranks</i> White helmet White cloth tunic Blue trousers Boots White buff belt White gloves (Buglers only) Scarlet sash (WO2s and SNCOs only) Dress cords, royal (Buglers only) Chevrons, gold on scarlet Other rank badges, gold and blue Anodised badges	As for Nos. 1, 4 and 5 Dresses	a. White helmets worn when ordered. b. Shoes/Naval pattern boots as ordered. c. Swords worn when ordered (WOs only). d. Cloth belt worn when ordered.  e. Cap and shoes worn when ordered.
No. 6W Stone- coloured shirt sleeve order	Beret (anodised badge) Stone-coloured shirt Stone-coloured trousers Corps pattern belt Boots or black shoes Coloured lanyard (Commando units only)	In hot weather as ordered	
No. 8W Tropical Military Working Dress	Beret (bronze badge) Stone-coloured shirt Lightweight, green trousers Combat, high boots Green, web belt	Working parties	a. Corps pattern belt worn when ordered.
No. 10 Seagoing Tropical Routine Dress	Beret (anodised badge) Stone-coloured shirt Stone-coloured shorts Stone-coloured stockings Shoes Corps pattern belt	Routine duties afloat	a. Seagoing bands only. b. Boots NP or sandals worn when ordered.

**ROYAL MARINES WARRANT OFFICERS, NON-COMMISSIONED OFFICERS AND MEN**

*Annex 6A continued*

DRESS	DESCRIPTION	OCCASIONS FOR WEAR	Notes
No. 10A Seagoing Tropical Working Dress	Beret (anodised badge) Blue shirt Blue shorts Blue stockings Boots DMS NP sandals/ shoes as ordered Corps pattern belt	Working parties afloat	a. Ship's detachments (including embarked landing craft personnel only).
No. 11W Tropical Combat Dress	Beret (bronze badge) Combat shirt Lightweight, green or tropical combat trousers Combat high boots Green web belt	For operations and on appropriate occasions of military training in hot climates. In place of No. 11 Dress in hot weather	a. Tropical DPM combat smock may be worn when ordered. b. Other web equipment to be worn as ordered. c. Steel helmet or hood worn when ordered. d. Army pattern lanyard and clasp knife to be worn when ordered.

**3. ARCTIC CLIMATES (Worn also by Royal Marines Officers)**

DRESS	DESCRIPTION	OCCASIONS FOR WEAR	Notes
No. 8A Arctic Working Dress	Cap, cold weather DPM Windproof jacket DPM Lightweight, green trousers Combat shirt Jersey, wool heavy Boots, ski march Snow gaiters Mittens, inner (wool) Mittens, outer windproof	Working dress	a. Arctic overalls (Du-liners) for technicians. b. Thermal overboots for ranks employed on static duties.
No. 11A Arctic Combat Dress	Cap, cold weather DPM Windproof jacket DPM Lightweight, green or windproof trousers DPM as ordered White camouflage suits as ordered Combat shirt Jersey, wool heavy Boots, ski march Snow gaiters Boots, ski march toe- covers as ordered Mittens, inner (wool) Mittens, outer, windproof/ waterproof as ordered	For operations and appropriate occasions of military training.	a. Arctic overalls (Du-liners) for technicians. b. Thermal overboots for ranks employed on static duties. c. Hat, combat DPM worn when ordered.

**4. ASSOCIATED ITEMS OF EQUIPMENT**

ITEM	BY WHOM WORN	OCCASIONS FOR WEAR
Sam Browne belt Infantry sword with leather scabbard	Warrant Officer 1 (as for officers)	Always with No. 1 Dress. As ordered with Nos. 4, 5 and 5W Dresses. As ordered
White buff sword belt and Staff Sergeant's sword with steel scabbard and buff sword knot	Warrant Officer 2 (Bandmaster), Drum Major and Bugle Major	Always with No. 1 Dress and on ceremonial occasions with No. 5W Dress
Brown leather sword belt Staff sergeant's sword with steel scabbard and brown leather sword knot	Warrant Officer 2 Provost Sergeant	Always with No. 1 Dress As ordered with Nos. 4, 5 and 5W Dresses  As ordered
White plastic bayonet frog and sidearms	Colour Sergeant and below	With white plastic belt for ceremonial and drill as ordered
White buff band equipment	Band Service below Warrant Officer 2nd class (Bandmaster)	On ceremonial occasions with Nos. 1 and 5W Dresses As ordered with Nos. 4 and 5 Dresses.

**5. ADDITIONAL ITEMS OF UNIFORM WHICH MAY BE WORN**

**1. Greatcoat.** May be ordered to be worn as required on occasions of ceremonial. The plastic belt and side arms may be worn outside the greatcoat: the half belt of the greatcoat is then to be unbuttoned and tucked inside. Greatcoats will be made available on loan as required.

**2. Gloves**

- a. *Warrant Officers* are to wear brown leather gloves and as a general rule are to follow the same instructions about wearing gloves as officers (Annex 5A).
- b. *Drum and Bugle Majors* are to wear white gloves as specified in the Dress Tables. When gloves are ordered on other occasions brown leather gloves may be worn.
- c. *Colour Sergeants and below* are to wear white gloves as specified in the Dress Tables. When gloves are ordered on other occasions olive green polyester gloves are to be worn, except that sergeants and above may wear brown leather gloves when walking out in uniform.

**3. Waterproof Clothing.** WOs, NCOs and men are to wear the RM raincoat or poncho, lightweight, RM Band ranks and Buglers the RM raincoat, poncho, lightweight or blue band cape as appropriate.

Annex 6A continued

**6. BADGES AND BUTTONS TO BE WORN WITH THE VARIOUS DRESSES**

DRESS	BADGES WORN	COLOUR OF BADGES AND BUTTONS
Blue tunic (Nos. 1 and 4 Dresses)	Cap badge Buttons Collar badges	Anodised Anodised Anodised, except on Band and Bugler's full dress tunics, which have embroidered collar badges. Anodised
	Letters RM (not worn on Band and Buglers' full dress tunics) Rank badges	Anodised
	Branch badges (not worn by WOs) SQ and Skill badges	Chevrons, gold on scarlet.* Other badges, gold on blue. Gold on blue. Gold on blue. (Will replace gold on green badges as stocks of these are exhausted.) Gold on scarlet chevrons.
	Good conduct badges (not worn on Band and Buglers' full dress tunics) King's badge Parachutist badge Royal Yacht flash	} Gold on blue
	Prince's badge Pilot ULA badge Observer ULA badge	Silver on blue } Gold/silver on blue
	Airgunner badge Army Parachute Jump Instructor's badge (APJI)	Light blue/gold on blue } Gold on blue
Lovat tunic (No. 5 Dress)	Cap/beret badge Buttons Collar badges Letters RM Rank badges Branch badge (Band and Bugler ranks only) King's badge Parachutist badge Royal Yacht flash Prince's badge Pilot ULA badge Observer ULA badge Airgunner badge Army Parachute Jump Instructor's badge (APJI)	Anodised Bronze Bronze Bronze Gold on green Gold on green } Gold on green Silver on green } Gold/silver on blue Light blue/gold on blue Gold on blue

(continued)

\* Gold on blue chevrons worn by CINCPACFLT Band, Royal Yacht, on 'Divisional' tunics.

DRESS	BADGES WORN	COLOUR OF BADGES AND BUTTONS
Stone-coloured tunic (No. 5W Dress)	Cap badge Buttons Letters RM Rank badges  King's badge Prince's badge  Royal Yacht flash Parachutist badge Pilot ULA badge Observer ULA badge Airgunner badge  Army parachute Jump Instructor badge (APJI)	Anodised Anodised Anodised WO1 and WO2 – anodised WO2 (Bandmaster) – gold on blue WO2 (Bugler), Bugle Major Drum Major – chevrons gold on scarlet, bugle and drums gold on blue NCOs – khaki on khaki drill chevrons.  } Khaki on khaki drill  Blue on white Light blue on khaki drill  } Light blue/gold on blue  Light blue on khaki
White ceremonial tunic (Band Service) (No. 5W Dress)	Helmet badge Buttons Letters RM Rank badge  Prince's badge	Gilding metal Anodised Anodised Chevrons gold on scarlet Other badges, gold on blue Scarlet on white
White tunic (Royal Yacht)	Cap badge Buttons Letters RM Rank badges King's badge Prince's badge Royal Yacht flash Good conduct badges Parachutist badge Pilot ULA badge Observer ULA badge Airgunner badge Army Parachute Jump Instructor badge (APJI)	Anodised Anodised Anodised Gold on blue Gold on blue Silver on blue Gold on blue Gold on blue Gold on blue Gold/silver on blue  Light blue/gold on blue Gold on blue
Combat jacket (No. 11 Dress)	Beret badge Rank badge	Bronze Black on green Light blue on khaki
Arctic windproof jacket (Nos. 8A and 11A Dresses)	Rank badges	Black on green Light blue on khaki
Heavy wool Jersey (No. 5J Dress)	Beret badge Rank badge RM Commando flash RM Band Service flash	Anodised Black on green Red on blue Red on blue

(continued)

**ROYAL MARINES WARRANT OFFICERS, NON-COMMISSIONED OFFICERS AND MEN**

*Annex 6A continued*

DRESS	BADGES WORN	COLOUR OF BADGES AND BUTTONS
Stone-coloured shirt (Nos. 5S, 6W, 8W and 10 Dresses)	Beret badge Letters RM  Rank badge*  Royal Yacht flash Parachutist badge Pilot ULA badge Observer ULA badge Airgunner badge Army Parachute Jump Instructor badge (APJI)	Bronze with No. 8W Dress, anodised with remainder Bronze with No. 5S Dress, anodised with Nos. 6W and 10 Dresses (not worn with No. 8W Dress) White on khaki on arm Anodised on wristlet Blue on white Light blue on khaki drill Light blue/gold on blue  Light blue on khaki
Light blue shirt (Nos. 8 and 10A Dresses)	Beret badge Letters RM Rank badge*	Anodised Anodised Red on blue on arm. Anodised on wristlet
Combat shirt (No. 11W Dress)	Beret badge Rank badges Parachutist badge Army Parachute Jump Instructors' badge (APJI)	Bronze Black on green  Light blue on khaki
White jacket, foodhandlers. (Cooks' working dress)	Beret badge Rank badge	Anodised Red on white
Great coat, khaki	Buttons Letters RM Rank badges	Anodised Anodised Khaki on khaki serge
RM raincoat	Rank badges	White on lovat
PTI's gymnasium vest and sweater	SQ badge	Red on white

\* Worn by Colour Sergeant and below on arm, above Colour Sergeant on wristlet.



Annex 6A continued

**7. ANODISED OR BRONZE BUTTONS WORN ON UNIFORM GARMENTS**

GARMENT	POSITION	CORPS PATTERN		LION AND CROWN	
		1in	¾in	¾in	½in
Cap	Chin strap	—	—	—	2
Greatcoat, RM, khaki	Forepart	10	—	—	—
	Shoulder straps (2)	—	2	—	—
	Belt	—	3	—	—
	Back vent	—	2	—	—
Tunic RM, blue	Forepart	5	—	—	—
	Shoulder straps (2)	—	2	—	—
	Breast pockets (2)	—	2	—	—
	Hip pockets (2)	—	2	—	—
	Cuffs (2) (WOs 1 only)	—	4	—	—
Tunic, ceremonial, yellow/gold-braided RM Band ranks and Buglers	Forepart	9	—	—	—
	Shoulder cords (2)	—	2	—	—
	Cuffs (2)	6	—	—	—
	Back vent	6	—	—	—
Tunic, ceremonial, gold-braided, Drum Major	Forepart	5	—	—	—
	Shoulder cords (2)	—	2	—	—
	Cuffs (2)	5	—	—	—
Tunic, ceremonial (Divisional Band, pre- war pattern) Royal Yacht	Forepart (hook fasteners)	—	—	—	—
	Shoulder cords (2)	—	2	—	—
	Cuffs (2)	6	—	—	—
Tunic, lovat	Forepart	4	—	—	—
	Shoulder straps (2)	—	2	—	—
	Breast pockets (2)	—	2	—	—
	Hip pockets (2)	—	2	—	—
Tunic, stone- coloured (Tropical ceremonial)	Forepart	4	—	—	—
	Shoulder straps (2)	—	2	—	—
	Breast pockets (2)	—	2	—	—
	Hip pockets (2)	—	—	—	—
Tunic, white drill (Band Service, tropical ceremonial)	Forepart	5	—	—	—
	Shoulder straps (2)	—	2	—	—
	Breast pockets (2)	—	2	—	—



## Annex 6B

# Special Dresses

### 1. Despatch Riders

Jacket and trousers, M/cyclist (Barbour suit); Boots, knee M/cyclist; Visor, helmet M/cyclist; Helmet M/cyclist; Gloves, brown, leather M/T (issued on loan from pool).

### 2. Physical Training Instructions' Working Dress

Serge trousers; elastic belt; gymnasium vest (trimmed with red); white sweater; track suit (blue); gymnasium shoes (*see* Annex 6C).

### 3. Cooks' Working Dress

As for corresponding naval ratings (Annex 4B para 5), except that WOs2 and SNCOs are provided with Cooks' caps, CPO/PO pattern for wear instead of uniform caps and are not entitled to a loan issue for cookery demonstrations and exhibitions (*see* Annex 6C).

### 4. RM Officers' Attendants and Officers' Mess Staff – Mess Clothing

White stewards' tunic: blue serge trousers; white gloves (*see* Annex 6C).

### 5. Grooms' Working Dress

Breeches, mens'; Boots, knee, riding; spurs, jack (*see* Annex 6C)

### 6. Tradesmens' Working Dress

Coveralls, mens', green; Boots, DMS, non-slip (*see* Annex 6C).

### 7. Drivers' Working Dress

Coveralls, mens', green (*see* Annex 6C)

### 8. Butchers' Working Dress

Shirts and trousers, blue, cotton; Boots DMS, non-slip (*see* Annex 6C).

### 9. Printers' Working Dress

Shirts and trousers, blue, cotton (*see* Annex 6C).

### 10. Royal Yacht Uniform

RM WOs, NCOs and men embarked in the Royal Yacht wear the following special dresses:

- a. *Working dress (General Service ranks only)* Jersey, wool heavy or stone-coloured shirt as ordered, worn with blue, serge trousers and gym shoes.
- b. *White uniform* Made-to-measure, white drill uniform, white gloves, and white canvas shoes for wear on appropriate occasions instead of stone-coloured uniform.
- c. *Blue uniform* A blue ceremonial full dress tunic, yellow or gold-braided is issued on personal loan to ranks (other than Band ranks and Buglers who already have one) for wear with blue serge trousers and

boots, glaze, Royal Yacht. RM orderlies to the Royal Party are to wear blue, lovat or civilian Dress when required to carry out a period of Royal Duty ashore. (In very hot weather stone-coloured shorts, stone-coloured shirt and stone-coloured stockings may be worn.)

- d. *Stone-coloured shorts*: These are worn with stone-coloured shirt, stone-coloured stockings and gym shoes as working dress in hot climates.
- e. *Flashes 'Royal Yacht'*: These are provided for wear on all uniform tunics and on working dress garments.

Full details of the scale of gratuitous and personal loan issues are shown in BR 96, *Stores Accounting and Storekeeping Manual*.

#### **11. RM Detachment of NP 1002, Diego Garcia, Working Dress**

WOs, NCOs and men appointed to this detachment are issued with stone-coloured shorts, stone-coloured stockings and desert boots (commercial pattern) for wear as working dress.

#### **12. Functional Clothing**

This is also provided for men employed on special duties such as aircrew, swimmer canoeists, sentries, dining hall attendants, etc.

#### **13. Evening Dress for WOs and SNCOs**

A scarlet or white mess jacket may be worn on certain formal occasions on an optional basis only by all WOs and SNCOs (see No 7 Mess Dress in Dress Tables).

The scarlet or white mess jacket may be worn in temperate climates and the white mess jacket in tropical climates. The evening tie, shirt, cummerbund and globe and laurel badge to be of the patterns prescribed for RM officers. Miniature globe and laurel badges are worn on each lapel; miniature badges of rank, embroidered gold, on scarlet on the right sleeve – chevrons to be 2in wide on scarlet background.

The following badges, embroidered gold, silver, or silver and gold on scarlet, may also be worn by those entitled:

King's badge, miniature, on left sleeve 2in below shoulder seam.

Prince's badge, miniature, on left sleeve, 2in below shoulder seam.

Parachutist badge, miniature, on right sleeve 2in below shoulder seam.

Army Parachute Jump Instructor's badge, miniature, on right sleeve 2in below shoulder seam.

Light Aircraft Pilot's badge, miniature, on left lapel below globe and laurel.

Light Aircraft Observer's badge, full size, on left sleeve 4in above cuff.

Light Aircraft Airgunner's badge, full size, on left sleeve 4in above cuff.

## Annex 6C

# Kit Scales

### SCALE 1 COMPULSORY KITS RM WOs, NCOs AND MEN

#### 1. Basic Kit

a. Items issued from Service sources and required to be maintained from KUA

	RANKS OTHER THAN BUGLERS AND BAND	BUGLERS	BAND RANKS	Notes
Bag, linen, brown	1	1	1	
Belt, waist Corps pattern	1	1	1	
Beret, blue on first entry, green when qualified	1	1	1	
Boots, ankle, army pattern c/w laces	1 pr	—	—	
Boots, ankle, naval pattern c/w laces	—	1 pr	1 pr	
Cap, plastic, RM	1	2	2	
Defenders, ear	1 pr	1 pr	1 pr	
Disc, identity, green	1	1	1	
red } with cord	1	1	1	
Gloves, cotton, white	1 pr	1 pr	1 pr	
Gloves, combat, black leather	1 pr	1 pr	1 pr	
Holdall	1	1	1	
Jersey, wool, heavy	2	2	2	
Jersey, sports	2	2	2	
Knife, clasp	1	1	1	
Knife, fork and spoon combined	1	1	1	
Lanyard, army pattern	1	1	1	
Mug, polypropylene, green	1	1	1	
Pillow slips, cotton	2	2	2	
Raincoat, RM	1	1	1	
Sheets, ratings'	3	3	3	
Shirts, combat	2	2	2	
Shirts, man's, tropical, stone	3	3	3	
Shoes, black, leather, DMS	1 pr	1 pr	1 pr	
Shoes, gymnasium	1 pr	1 pr	1 pr	
Shorts, sports, white	2 prs	2 prs	2 prs	
Socks, combat GS, olive drab	5 prs	5 prs	5 prs	
Suitcase	1	1	1	
Suit, lovat (tunic and trousers)	1	1	1	
Trousers, lovat (barrack dress)	1 pr	1 pr	1 pr	

(continued overleaf)

	RANKS OTHER THAN BUGLERS AND		BAND RANKS	Notes
	BAND	BUGLERS		
Tie, worsted, braid, drab	1	1	1	
Trousers, blue, serge No. 1 Dress RM	1 pr	2 prs	—	
Trousers, blue, serge No. 1 Dress RM Band	—	—	2 prs	
Tunic, blue, serge No. 1 Dress RM	1	1	1	
Type for marking clothes	1	1	1	
<i>b. To be provided by the individual</i>				
Brush, clothes	1	1	1	
Brush, shoe cleaning	1	1	1	
Brush, shoe polishing	1	1	1	
Housewife, filled, mens'	1	1	1	
Pyjama suits	2	2	2	
Scissors	1 pr	1 pr	1 pr	
Towels, hand	2	2	2	
Trunks or drawers	3 prs	3 prs	3 prs	
Vests	3	3	3	
<b>2. Additional items for certain ranks</b>				
<i>a. Ranks in detachments afloat (see also under Tropical and Personal Loan Items)</i>				
Jacket, windproof, working	1	—	—	
<i>b. Ranks in Commando Units:</i>				
Lanyard, coloured (and on transfer between units)	1	1	1	
<i>c. Cooks (issued immediately before qualifying courses)</i>				
Shirts, knitted, cooks' (afloat only)	4	—	—	(a)
Trousers, cook's	4 prs	—	—	
<i>d. Wardroom Attendants, RM Officers' Attendants and RM Officers' Mess Staff</i>				
Trousers, blue serge, No. 1 Dress RM	1 pr	—	—	
<i>e. Butchers (on selection to qualify)</i>				
Shirts, blue, cotton, working	3	—	—	} (b)
Trousers, blue, cotton, working	3 prs	—	—	
<i>f. Printers (on qualification)</i>				
Shirts, blue, cotton, working	2	—	—	} (b)
Trousers, blue, cotton, working	2 prs	—	—	
<i>g. Grooms</i>				
Breeches, man's (Army pattern)	2 prs	—	—	
Boots, knee, riding	2 prs	—	—	
<i>h. CINNAVHOMÉ Band</i>				
Divisional tunic	—	—	1	(g)
<b>3. Additional items issued on promotion</b> (See also under badges Annex 6D)				
<i>a. Sergeant</i>				
Sash, worsted, scarlet	1	1	1	
Shirts, white, tropical (Sergeant Cooks' only)	4	—	—	

(continued)

ROYAL MARINES WARRANT OFFICERS, NON-COMMISSIONED OFFICERS AND MEN

Annex 6C continued

	RANKS OTHER THAN BUGLERS AND BAND	BUGLERS	BAND RANKS	Notes
<b>b. Warrant Officer 1</b>				
(1) Items provided by means of a cash grant				
Suit, blue No. 1 Dress, officers' pattern				
material with stand-up collar	1	—	—	
Boots,	1 pr	—	—	
Badge, collar	2	—	—	
Cap, plastic	1	—	—	
Letters 'RM' anodised				
(2) Items provided from Service sources				
Gloves, brown, cape	1 pr	—	—	
Lanyard, blue, officers' pattern	1	—	—	
<b>c. Warrant Officer 2</b>				
(1) Items provided from Service sources				
Gloves, brown, cape	1 pr	—	—	
<b>4. New entrants</b>				
<b>a. Additional Items issued from Service sources – not required to be maintained on completion of initial training</b>				
Stockings, nylon, blue or white	2 prs	2 prs	2 prs	
(Juniors only)				
<b>b. To be provided by all ranks</b>				
Towel, hand	1	1	1	
<b>5. Tropical clothing</b>				
<b>a. Initial free issue (on first occasion of need) – scale to be maintained</b>				
Uniform, man's tropical				
stone-coloured	2	3	3	
Sandals	1 pr	1 pr	1 pr	
Buttons, anodised, large	8	12	12	
Buttons, anodised, small	16	16	16	
Rings, split	24	24	24	
<b>b. Additional items for certain ranks</b>				
(1) Buglers and Band Service afloat				
Shorts, tropical stone-coloured	—	2 prs	2 prs	
Stockings, tropical stone-coloured	—	2 prs	2 prs	
(2) Ranks in detachments afloat:				
Shorts, blue, tropical	2 prs	—	—	
Stockings, blue, wool, thin	2 prs	—	—	
Shorts, stone-coloured, tropical	2 prs	—	—	
Stockings, nylon, stone-coloured	2 prs	—	—	
<b>6. Personal loan items subject to periodic re-issue</b>				
(for further instructions see BR 96)				
<b>a. All ranks</b>				
Bag, kit, seamen's (large)	1	1	1	
Bag, kit, universal (small)	1	1	1	
Boots, combat, high	2 prs	2 prs	2 prs	
Drawers, olive drab, ankle length	1 pr	1 pr	1 pr	
Gloves, white cotton	—	2	2	
Headnet, insect	1	1	1	
Insoles, for boots, combat, high	1 pr	1 pr	1 pr	

(continued overleaf)

	RANKS OTHER THAN BUGLERS AND			Notes
	BAND	BUGLERS	BAND RANKS	
Liner, for combat jacket, temperate	1	1	1	
Net, camouflage, helmet	1	1	1	
Respirator, S6 (complete with haversack and spare canister)	1	1	1	
Towels, hand, green	2	2	2	
Trousers, men's lightweight, polyester/cotton, green	2 prs	2 prs	2 prs	(b)
Plastic equipment (white)				
Belt, waist	1	—	—	
Frog, bayonet	1	—	—	
Locket, union	1	—	—	} not for WOs
Sling, rifle	1	—	—	
Buff equipment (white)				
Belt, waist	—	1	1	
Belt, cross band	—	—	1	} Band Sergeants and below
Pouch, music, band	—	—	1	
Device for pouch	—	—	1	
Carriage, drum (Buglers and RM School of Music, drummers only)	—	1	1	
Sword equipment				
Belt, sword, brown leather (WO2, Band Colour Sergeant, WO2 Bandmaster, Drum Major, Bugle Major and Provost Sergeant only)	1	1	1	
Sam Browne equipment (belt, right brace and frog) (WO1 only)	1	—	—	
<i>b. Band and Buglers on entry, Other Ranks when drafted to HM Ships</i>				
Helmet, white, Wolseley pattern	1	1	1	
Ball ornament, GM	1	1	1	
Front plate, GM	1	1	1	
Chain, chin, GM	1	1	1	
<i>c. Band and Buglers</i>				
Cape, cloth, band	—	1	1	(d)
Cover, protective	—	1	1	
Trousers, blue RM Band No. 1	—	—	1	
Tunic, cloth, yellow-braided (below Band Sergeant)	—	1	1	} (e)
Tunic, cloth, gold-braided (Band Sergeant and above)	—	1	1	
Tunic, cloth, gold-braided Drum Major's pattern	—	—	1	
Overalls, blue (officers pattern)	—	—	1 pr	
Wellington boots (officers pattern)	—	—	1 pr	
Dress cord, royal, silk (Bugle Major only)	—	1	—	
Dress, cord, royal, worsted (other than Bugle Major)	—	1	—	

(continued)



ROYAL MARINES WARRANT OFFICERS, NON-COMMISSIONED OFFICERS AND MEN

Annex 6C continued

	RANKS OTHER THAN BUGLERS AND BAND			BAND BUGLERS	BAND RANKS	Notes
Aprons, led, white, RM Band (Drummers and Buglers only)	—	3	3			
Bugle	—	1	—			
Drum, side, complete	—	1	—			
Drum, case for sticks, drum	—	1	—			
Collar badge (embroidered), gold on scarlet (Band Sergeant and above)	—	2	2			
Collar badge (embroidered), yellow on scarlet (below Band Sergeant)	—	2	2			
Rank badge (chevrons), gold on scarlet (Lance Corporal, Corporal and Sergeant)	—	1 set	1 set			
Globe and laurel arm badge, gold on blue (Colour Sergeant)	—	1	1			
Royal Arms, gold on blue (Warrant Officer 1)	—	1	1			
Lyre in wreath crown above, gold on blue (Warrant Officer 2) (Bandmaster)	—	—	1			
Branch badge, gold on blue for Buglers	—	1	—			

7. Additional items for certain ranks

a. <i>Ranks in Detachments Afloat</i>					
Boots, conductive, non-slip	1 pr	—	—		
Shirt, blue, working, cotton	2	—	—		
Trousers, blue, working, cotton	2 prs	—	—		(b)
b. <i>Physical Training Instructors</i>					
Belt, elastic, gymnasium	2	—	—		
Sweaters, white	2	—	—		
Track suit (blouse and trousers)	1	—	—		
Trousers, Men's gymnasium	1 pr	—	—		
Vest, cotton, gymnasium	4	—	—		
c. <i>Cooks</i>					
Apron, foodhandlers'	6	—	—		
Caps, foodhandlers'	4	—	—		
Boots, DMS, non-slip	1 pr	—	—		
d. <i>Wardroom Attendants, RM Officers' Attendants and RM Officers' Mess Staff (Below Sergeant)</i>					
Apron, foodhandlers'	6	—	—		
Gloves, cotton, white	3 prs	—	—		
Tunics, stewards'	3	—	—		
e. <i>Tradesmen</i>					
Coveralls, men's green	2	—	—		(b)
Boots DMS non-slip (Armament Artificers (Vehicle), Vehicle Mechanics (Electrician) Armourers, Metalsmiths and Drivers-Printers)	1 pr	—	—		(f)
f. <i>Drivers</i>					
Coveralls, men's green	2	—	—		(b)

(continued overleaf)

	RANKS OTHER THAN BUGLERS AND BAND	BUGLERS	BAND RANKS	Notes
<i>g. Grooms</i>				
Boots, knee, mounted	1 pr	—	—	
Spurs, jack, ordinary	1 pr	—	—	
Trees, for boots, knee, mounted	1 pr	—	—	
<i>h. Butcher</i>				
Boots, DMS non-slip	1 pr	—	—	
<i>j. CINCNAVHOMÉ Band</i>				
Cap, plastic	—	—	1	(h)

**8. Tropical clothing***a. Band and Buglers*

Tunic, white, ceremonial (Army No. 3 pattern)	—	1	1	
Tunic, white, ceremonial (Drum Major's pattern)	—	—	1	

*Notes*

- (a) Cooks serving ashore are issued with six long-sleeved, jackets, food-handlers on individual (temporary) loan.
- (b) One pair of trousers, men's, lightweight, green, to be withdrawn when blue working dress is issued. When ranks are drafted for service in an RM detachment afloat one pair of trousers, mens', lightweight, green is to be withdrawn and is to be replaced when the rank is drafted ashore again. The issues of blue, working dress to Butchers and Printers count against the issue of draft afloat, and vice versa. Two pairs of trousers, men's, lightweight, green to be withdrawn on issue of coveralls.
- (c) Tropical clothing is issued to men drafted to a ship or station where it is required or to UK-based Commando units: issues to the latter count against entitlement on embarkation or draft abroad, unless special instructions to the contrary are given.
- (d) Cloth band cape issued to Band ranks and Buglers only on becoming sufficiently trained to take their place in a band for ceremonial.
- (e) The tunic, cloth, yellow-braided, is issued to Musicians, Buglers and Junior Musicians and Buglers sufficiently trained to play in bands. The yellow-braided tunic is withdrawn on issue of gold-braided and the ordinary gold-braided on issue of the Drum Major's pattern.
- (f) The issue of non-slip boots to drivers is restricted to those employed on full-time vehicle inspection or servicing duty, and is to be authorised by Motor Transport Officers.
- (g) To be Special Measure by RM Poole Clothing Store, if tunic cannot be supplied by RM Eastney.
- (h) For wear with the Royal Cypher.

**SCALE 2 – OPTIONAL KIT RM WOs, NCOs AND MEN**

<i>a. All ranks</i>	Scale	Notes
Bag, toilet	1	(a)
Bag, travelling	1	
Belt, waist, Corps pattern	2	
Berets	1 pr	
Boots, combat, high	1	} (c)
Brush, hair	1	
Brush, shaving	1	
Brush, shoe, cleaning and polishing	1	
Brush, tooth	1	
Cap, plastic	1	
Comb, hair	1	(c)
Gloves, polyester, olive drab	1 pr	
Handkerchiefs, white	8	(c)

(continued)



ROYAL MARINES WARRANT OFFICERS, NON-COMMISSIONED OFFICERS AND MEN

Annex 6C continued

	Scale	Notes
Jersey, wool, heavy	1	
Pillow slips	2	
Pyjama suits	1	} (c)
Razor	1	
Sheets, ratings'	1	
Shirts, blue working	2	
Shirts, stone-coloured or combat	4	
Shoes, black leather, DMS	1 pr	
Shoes, gymnasium	1 pr	
Shorts, blue drill, tropical	2 prs	
Shorts, stone-coloured	2 prs	
Socks, black	1 pr	
Socks, combat GS.	4 prs	
Stockings, blue, wool	2 prs	
Stockings, stone-coloured, nylon	2 prs	
Suit, lovat	1	
Tie, worsted braid, drab	1	
Towels, hand (or 1 Towel, bath)	2	
Trousers, blue, working dress	2 prs	
Trunks	4 prs	(c)
Uniform, man's tropical, stone-coloured (tunic and trousers)	1	
Vests	2	(c)
<i>b. Provost staff only</i>		
Cane, walking out	1	
<i>c. Sergeants and above</i>		
Gloves, brown, leather	1 pr	
Stick, walking, black ebony	1	(b)
Jacket, mess, white (with badges and buttons)	1	
Jacket, mess, scarlet (with badges)	1	
Shirt, soft, evening, collar-attached	1	
Cummerbund, scarlet	1	
Socks, black	1 pr	
Tie, evening	1	
Miniature medals	1	(c)

Notes

- (a) Not a Service item: value for compensation purposes taken as 20p.  
 (b) Not a Service item: value for compensation purposes taken as £1.50.  
 (c) Not a Service item.

## Annex 6D

# Gratuitous Issue of Badges

### 1. On entry

#### a. All ranks

Cap/beret badge

2 anodised (for cap and beret)  
1 bronze (for beret with combat dress)

Collar badge

2 anodised (for blue tunic)  
2 bronze (for lovat tunic)

Letters RM

2 anodised (for blue, white tunics, stone-coloured shirts and greatcoat)  
4 bronze (for lovat tunic and stone-coloured shirt No. 5S Dress)

### 2. On promotion

#### a. Lance Corporal, Corporal, Sergeant

Rank badge (chevrons)

1 set gold on scarlet (for blue tunic)  
1 set gold on green (for lovat tunic)  
3 sets white on khaki drill (for stone-coloured shirts)  
1 pr white on lovat (for raincoat)  
4 black on green (for JWHs and combat shirts)

#### b. Colour Sergeant

Globe and laurel arm badge

Crown for addition to chevrons

1 gold on blue (for blue tunic)  
1 gold on green (for lovat tunic)  
3 white on khaki drill (for stone-coloured shirts)  
4 black on green (for JWHs and combat shirts)  
1 pr white on lovat (for raincoat)

Complete badge (crown and chevrons)

#### c. Warrant Officer 1, Warrant Officer 2, Warrant Officer 2 (Bandmaster)

Rank badges

Royal Arms

Crown in Wreath }

1 gold on blue (for blue tunic)\*  
1 gold on green (for lovat tunic)\*  
1 pr white on lovat (for raincoat)  
4 black on green (for JWHs and combat shirts)  
1 anodised (for shirt-sleeve orders)  
2 anodised (for cap and beret)  
1 bronze (for beret with combat dress)  
1 (if not already issued)

Cap badge (divided pattern – WO1 to have officers' pattern)

Wrist strap, leather

\* Lyre in wreath, crown above, issued to WO2 (Bandmaster) in lieu.

*Annex 6D continued*

**3. Additional issues to ranks provided with combat dress**

- a. *NCOs*  
Rank badge 6 black on green (for temperate and tropical combat jackets and arctic smocks)
- b. *WOs*  
Rank badge 6 black on green (for temperate and tropical combat jackets and arctic smocks)

**4. Additional issues to ranks whose kits include blue working dress shirts**

- Colour Sergeant and below*  
Rank badge 2 sets red on blue

**5. Additional issues to Cook ranks**

- Colour Sergeant and below*  
Rank badge 4 sets scarlet on white to ranks afloat – 6 sets to ranks ashore for wear on jackets foodhandlers issued on individual loan

**6. Additional issues to band and bugler ranks**

- On Appointment to Staff bands*
  - All ranks*
  - Special Cap/badge 2 anodised or gilt
  - Royal Cypher EIR 1 anodised or gilt
  - Royal Cypher EIR with crown 2 anodised or gilt
  - Royal Cypher GVR 1 anodised or gilt
- } CINCNAVHOME Band only

**7. On appointment**

- a. *Drum Major, Bugle Major*  
Rank badge 1 set gold on scarlet chevrons } (for blue tunic)  
1 gold on blue drum or bugle }  
1 set gold on green chevrons } (for lovat tunic)  
1 gold on green drum or bugle }  
1 pr white on lovat (for raincoat)  
1 anodised (for shirt-sleeve orders)
- Cap badge (divided pattern) 2 anodised } (if not already issued)  
1 bronze }  
1
- Wrist strap, leather
- b. *Provost Sergeant*  
Rank badge (WO2s only) 1 set gold on scarlet chevrons (for blue tunic)  
1 set gold on green chevrons (for lovat tunic)  
1 pr white on lovat (for raincoat)  
4 black on green (for JWHs and combat shirts)  
1 chromium (for shirt-sleeve orders)
- (Colour Sergeant, Sergeant and WO2s)
- Wrist strap, leather 1 (if not already issued)

**8. On qualifying for Branch, Specialist qualification, Skill or Special badge**

- Royal Marines Commando flash 4 red on blue } (for HWJs)
- Royal Marines Band Service flash 4 red on blue }
- Band Service and Bugler Branch badges 3 gold on blue (for blue tunic, ceremonial tunic and white tunic (CINCNAVHOME Band only))  
2 black on green (for jersey, wool, heavy)

*(continued)*

# ROYAL MARINES WARRANT OFFICERS, NON-COMMISSIONED OFFICERS AND MEN

## Annex 6D continued

Other Branch badges (Telecommunications Technician and Tradesmen)	1 gold on blue	} (replacing gold on green badges as stocks become available)
Specialist Qualification and Skill badges	1 gold on blue	
King's badge	2 gold on scarlet (for PTI Vest, sweater)	
Prince's badge	1 gold on blue (for blue tunic)	
Parachutist badge	1 gold on green (for lovat tunic)	
	1 silver on blue (for blue tunic)	
	1 silver on green (for lovat tunic)	
	1 gold on blue (for blue tunic)	
	1 gold on green (for lovat tunic)	
Pilot and Observer badges	3 light blue on khaki drill (for stone-coloured shirts)	
Airgunner badge	2 gold/silver on blue (for blue and lovat tunics)	
	3 light blue/gold on blue (for stone-coloured shirts)	
Army Parachute Jump Instructor badge (APJI)	5 light blue/gold on blue (for blue, lovat tunics and stone- coloured shirts)	
	2 gold on blue (for blue and lovat tunics)	
	3 light blue on khaki drill (for stone-coloured shirts)	

## 9. On Award of Good Conduct badge

*Marines, Musicians and Buglers*

Good Conduct badges (sets of 1, 2 or 3 chevrons as appropriate)	1 set gold on scarlet (for blue tunic)
--	--

## 10. Additional issues to ranks serving in the RM Band CINCAVHOME

- General service ranks only; on issue of yellow/gold braided tunic*

Rank badges	1 set gold on blue
Collar badges (embroidered)	2 yellow on scarlet
	2 gold on scarlet (Sergeant and above)
- Band Service ranks on issue of Divisional Band Tunic (on Individual Loan)*

Rank badges	1 set gold on blue
-------------	--------------------
- Royal Yacht flashes*

Blue tunic	2 gold on blue
Lovat tunic	2 gold on green
Stone-coloured shirts	3 blue on white
Jersey, wool, heavy	1 red on blue

## 12. Additional issues to ranks provided with tropical clothing

- All entitled ranks*

King's badge	2 khaki on khaki drill
Prince's badge	2 khaki on khaki drill
	1 scarlet on white (for white tunic, Band Service)
Parachutist and Army Parachutist Jump Instructors' badges	2 light blue on khaki drill
Pilot, ULA, Observer and Airgunner badges	2 light blue/gold on blue
Good Conduct badge (sets of 1, 2 or 3 chevrons as appropriate)	2 sets white on khaki drill
- Band and Bugler ranks*

Branch badge	2 khaki on khaki drill
--------------	------------------------

(continued overleaf)

*Annex 6D continued*

- |  |  |   |
|--|--|---|
| <i>c. Colour Sergeant and below</i>                      |  |   |
| Rank badge (chevrons)                                    | 2 sets white on khaki drill<br>1 set gold on scarlet chevrons, gold on blue badges (for white tunic, Band Service) |   |
| <i>d. Warrant Officers 1 and 2</i>                       |  |   |
| Warrant Officer (Bandmaster)                             | 2 sets white on khaki drill  |   |
| Rank badge   | 2 sets gold on scarlet<br>1 gold on blue (for white tunic, Band Service)   |   |
| <i>e. On Appointment – Drum Major, Bugle Major</i>       |  |   |
| Rank badge   | 3 sets gold on scarlet chevrons<br>3 gold on blue drum or bugle  | (for stone-<br>coloured, white<br>tunic, Band<br>Service) |
| <br><i>f. Ranks Serving in the RM Band CINCPACVHOMES</i> |  |   |
| (1) On issue of white tunic (if entitled)                |  |   |
| Rank badges  | 1 set gold on blue   |   |
| King's badge   | 1 gold on blue   |   |
| Prince's badge   | 1 silver on blue   |   |
| Good Conduct badges                                      | 1 set gold on blue   |   |
| Parachutist badge  | 1 gold on blue   |   |
| Pilot and Observer badges                                | 1 gold/silver on blue  |   |
| Airgunner badge  | 1 light blue/gold on blue  |   |
| APJI badge   | gold on blue   |   |
| (2) Royal Yacht flashes                                  |  |   |
| White tunic  | } 2 blue on white  |   |
| Stone-coloured tunic                                     |  |   |

# BADGES AND DISTINCTION MARKS OF RANK

## 4. Royal Marines

### Officers

#### CAP/BERET BADGES



General Officers



Brigadiers and Colonels



All Other Officers  
(Divided Badge)  
(Anodised or Bronze)

#### CAP PEAKS



General Officers



Brigadier, Colonel, Lt. Colonel & Major

#### HELMET BADGE



(Gilded Metal)

#### BUTTONS (ANODISED AND BRONZE)



General Officers



Brigadiers  
and Colonels



Chin Strap (Cap)



Corps Button  
All Officers

#### COLLAR BADGE



(Anodised and Bronze)

#### GORGET PATCHES



General Officers



Brigadiers and Colonels



#### SHOULDER STRAPS (MESS JACKETS)



General  
Officers



Brigadiers  
and Colonels

#### OFFICERS' RANK BADGES



General



Lieutenant-General



Major-General



Brigadier



Colonel



Lieutenant-Colonel  
BR81



Major



Captain



Lieutenant



2nd Lieutenant

## BADGES AND DISTINCTION MARKS OF RANK

### 4. Royal Marines

#### Officers (Contd.)

##### SHOULDER TITLES



Letters  
(Anodised and Bronze)



Flash

---

##### RM RESERVE OFFICERS' SHOULDER TITLES

---



Letters  
(Anodised and Bronze)



Flash

---

##### SPECIALIST BADGES – QUALIFICATION AND SKILL

---



King's Badge



Pilot Unit Light Aircraft  
(Army Trained)



Pilot  
(Navy Trained)



Officers serving in the Royal Yacht



Parachutist



# BADGES AND DISTINCTION MARKS OF RANK

## 4. Royal Marines

### Warrant Officers, N.C.O.s and Men

#### CAP/BERET BADGES (Anodised or Bronze)



WO1  
(Officers' divided badge)



WO2  
(Divided badge)



Ranks  
(Composite badge)

#### HELMET BADGE (Gilded metal)



All Ranks

#### COLLAR BADGES (Anodised and Bronze)



WO1 (Officers)



All Other Ranks

#### BADGE OF APPOINTMENT



Provost Sergeant



4 Years



8 Years



12 Years

#### GOOD CONDUCT BADGES

#### RANK BADGES



WO1



WO2



Colour Sergeant  
(for blue dress)



(for other dress)



Sergeant



Corporal



Lance Corporal

#### BRANCH BADGES



Telecommunications  
Technician



Other Tradesmen

#### SHOULDER TITLES



Letters  
(Anodised and Bronze)



Flash

#### BUTTONS (Anodised and Bronze)



Corps Button



Chin Strap (Cap)

#### ARMLETS



RM Provost



RM Police



## BADGES AND DISTINCTION MARKS OF RANK

### 4. Royal Marines

#### Warrant Officers, N.C.O.s and Men (Contd.)

##### SPECIALIST BADGES – QUALIFICATION AND SKILL



Drill & Platoon  
Weapons



Driver



Signaller



Physical Training



King's Badge



Letters in wreath denote

- AE – Assault Engineer
- C – Clerk
- HW – Heavy Weapons
- K – Cook
- LC – Landing Craft
- ML – Mountain Leader
- MP – Provost
- SC – Swimmer Canoeist



Sniper



Marksman



Army Parachute  
Jump Instructor



Parachutist



Pilot Unit Light Aircraft



Observer Unit  
Light Aircraft



Air Gunner Unit  
Light Aircraft



Ranks serving in the Royal Yacht

(for crowns and stars worn with these badges – see chapter 6)

# BADGES AND DISTINCTION MARKS OF RANK

## 4. Royal Marines

### Band Service

RM Band Service personnel wear the same badges as Officers, Warrant Officers, NCOs and Men with the following exceptions:

**CAP BADGE**  
CINCNAVHOMES Band



**ROYAL CYPHERS**  
CINCNAVHOMES Band

Silver



Worn above 'grenade' cap badge  
and (without crown) on helmet plate.



Worn on helmet plate

**PRINCE OF WALES PLUME**  
Band of HM Royal Marines  
Commandos



Silver

(Worn with anodised cap badge)

**COLLAR BADGE**



Worn with Nos. 1 & 4 Dress.  
Yellow on scarlet below Band Sergeant

**SHOULDER TITLES**



Flash

**SPECIAL BADGE**



Princes Badge

**RANK BADGE**



WO2 Bandmaster

**BADGES OF APPOINTMENT**



Drum Major



Bugle Major

**BRANCH BADGES**



Band Ranks



Bugler

# **BR 81**

## **Supplement 2**

### **Illustrations of Uniforms**

<b>RN</b>	<b>Naval Officers Senior Ratings Junior Ratings</b>
<b>RM</b>	<b>Officers Warrant Officers, NCOs and Men</b>
<b>QARNNS</b>	<b>Women Officers Women Senior Ratings Women Junior Ratings Male Officers Male Ratings</b>
<b>WRNS</b>	<b>Officers Senior Ratings Junior Ratings</b>



**No. 1 Dress**  
Generals, Lieutenant-Generals and Major-Generals.



**No. 1 Dress**  
Majors and above – overalls, wellington boots and spurs.  
**No. 4 Blue Dress**  
All officers.



**No. 1 Dress**  
Band Officers. Ceremonial parades and evening wear.



**No. 1 Dress**  
Band Officers. Ceremonial Day Coat (alternative wear).

## Plate 13. OFFICERS



**No. 2 Mess Dress**

Colonels and above wear blue shoulder straps. Captains and below wear plain trousers. Soft-fronted evening shirt when ordered.

**No. 7 Mess Undress**

Soft-fronted evening shirt, no decorations.



**No. 5 Lovat Dress**



**No. 5J Lovat Dress**



**No. 5S Lovat Dress**



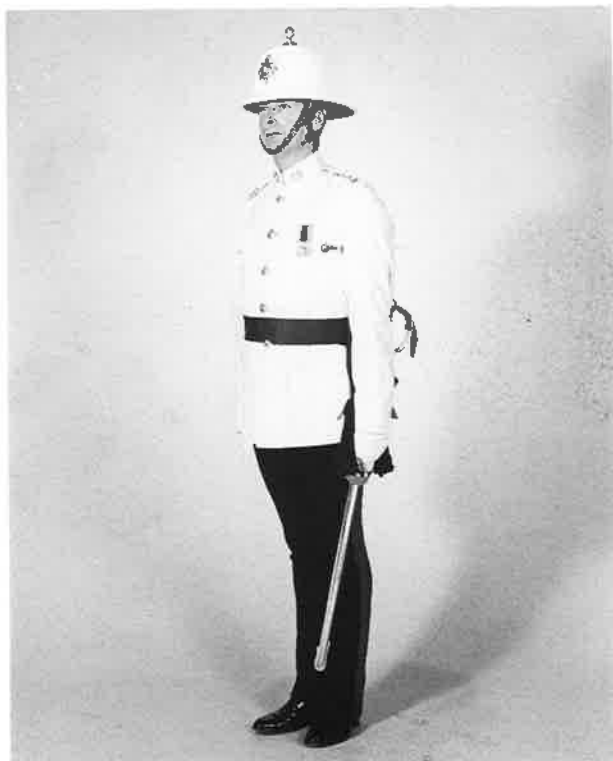
**No. 2W Mess Dress**

Colonels and above, white shoulder straps. Majors and above—overalls, wellington boots and spurs. Soft-fronted evening shirt when ordered.



**No. 5W Tropical Dress**

Stone-coloured for ceremonial wear.



**No. 5W Dress**

Tropical Ceremonial—Band Officers. White tunic worn with white trousers and white boots—Royal Yacht.

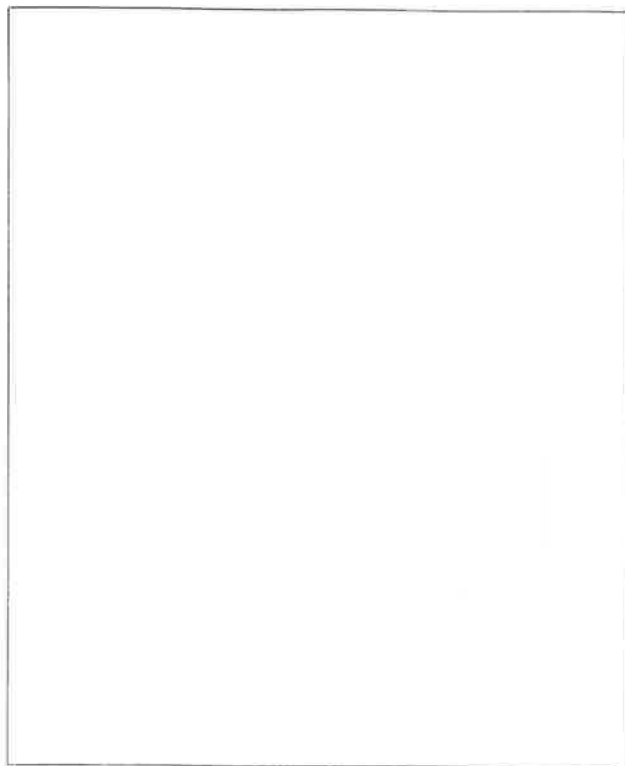


**No. 6W Stone-coloured Dress**

**Plate 15. OFFICERS**



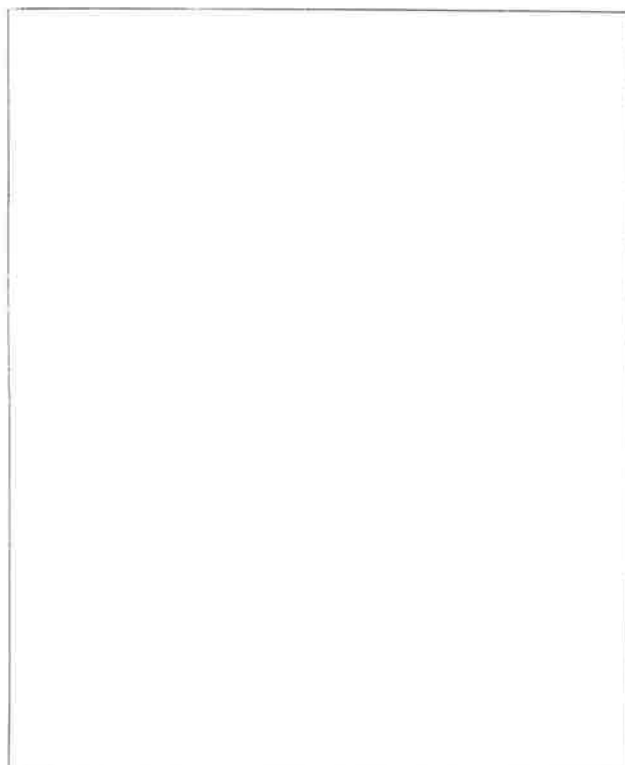
**No. 10W Red Sea Rig**



**Spare**



**Spare**



**Spare**



**No. 1 Dress**

Warrant Officers 1 – tunic in officers' material and pattern but with stand-up collar, officers' cap/collar badges, blue lanyard and boots.

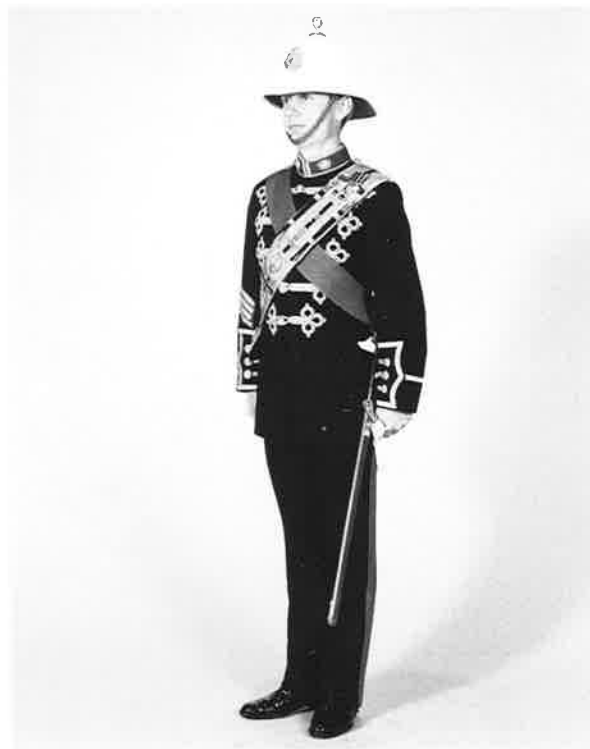


**No. 1 Dress**

All ranks. Warrant Officers 2 wear brown sword belt and gloves and divided cap badge. Scarlet sash – WOs and SNCOs.

**No. 4 Blue Dress**

Medal ribbons in place of medals.



**No. 1 Dress**  
Drum Major.



**No. 1 Dress**  
Bugle Major.



## Plate 17. WARRANT OFFICERS, NCOs AND MEN

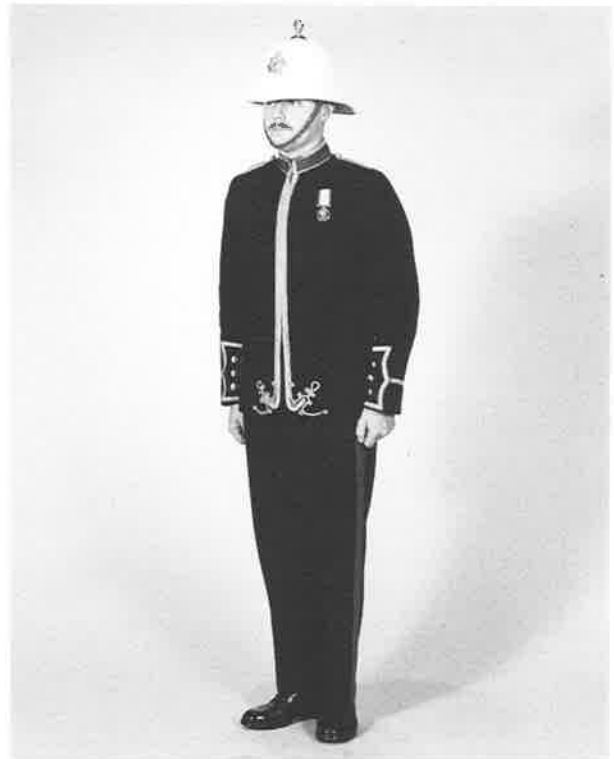


**No. 1 Dress**

Band ranks – Band Sergeants and above, gold-braided tunic, gold on scarlet collar badges. Buglers – Dress Cords Royal in place of music pouch.

**No. 4 Blue Dress**

All ranks – medal ribbons in place of medals.



**No. 1 Dress**

Band Ranks Royal Yacht Divisional Band. (Pre-war design tunic)



**No. 5 Lovat Dress**

Shoes and cloth belt when ordered. Cap when ordered.



**No. 5J Lovat Dress**



**No. 5S Lovat Dress**

White belt (white buff for band ranks) when ordered.



**No. 7 Mess Dress**

Warrant Officers and SNCOs only. (Optional Dress)



**No. 8 Dress**

Worn also by Officers.



**Alternative No. 8 Dress**

Worn also by Officers. Blue naval pattern action/working dress. Windproof working jacket may be worn.

**No. 10W Dress**

With naval pattern blue shorts in place of trousers.

# **Plate 19. WARRANT OFFICERS, NCOs AND MEN**



**No. 11 Dress**  
Worn also by Officers.



**No. 5W Tropical Dress**  
Stone-coloured, for ceremonial wear.



**No. 5W Tropical Dress**  
Drum Majors wear wellington boots and overalls (Officers' pattern).  
Worn with white trousers and white canvas shoes – Royal Yacht.



**No. 5W Tropical Dress**  
Bugle Major and Buglers. Musicians – without Dress Cords Royal.  
Worn with white trousers and white canvas shoes – Royal Yacht.



**No. 6W Stone-coloured Dress**  
All ranks.

**No. 10W Dress**  
With stone-coloured shorts and stockings and white buff belt –  
seagoing bands.



**No. 8W Dress**  
Worn also by officers. Corps pattern belt worn when ordered.



**No. 11W Dress**  
Worn also by Officers.

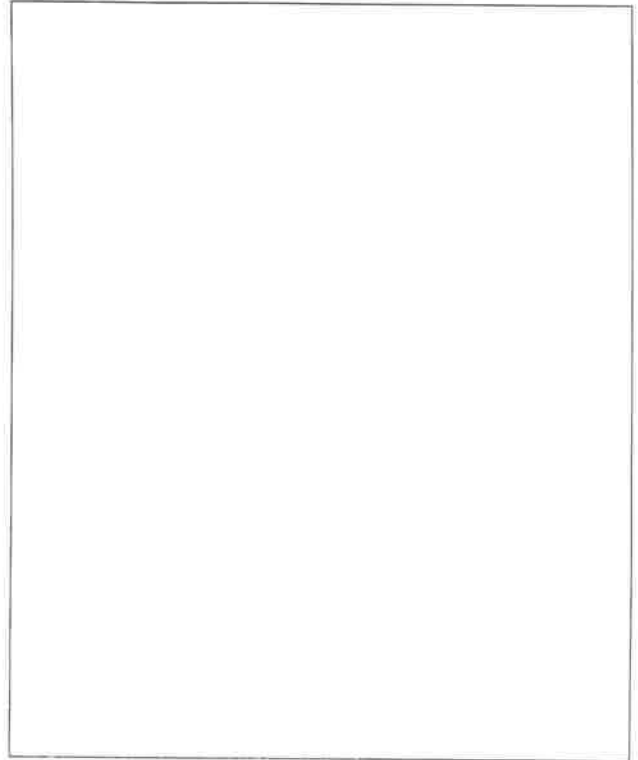


**No. 8A Dress**  
Worn also by Officers.

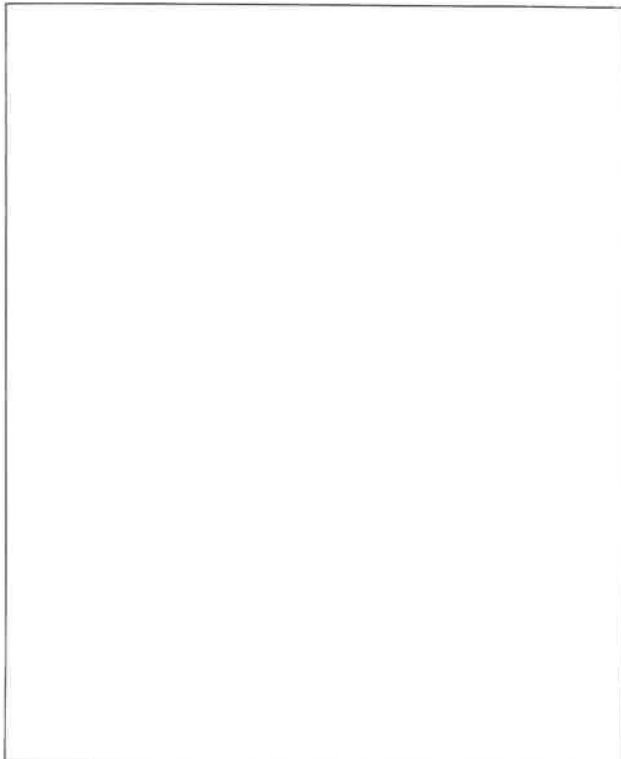
**Plate 21. WARRANT OFFICERS, NCOs AND MEN**



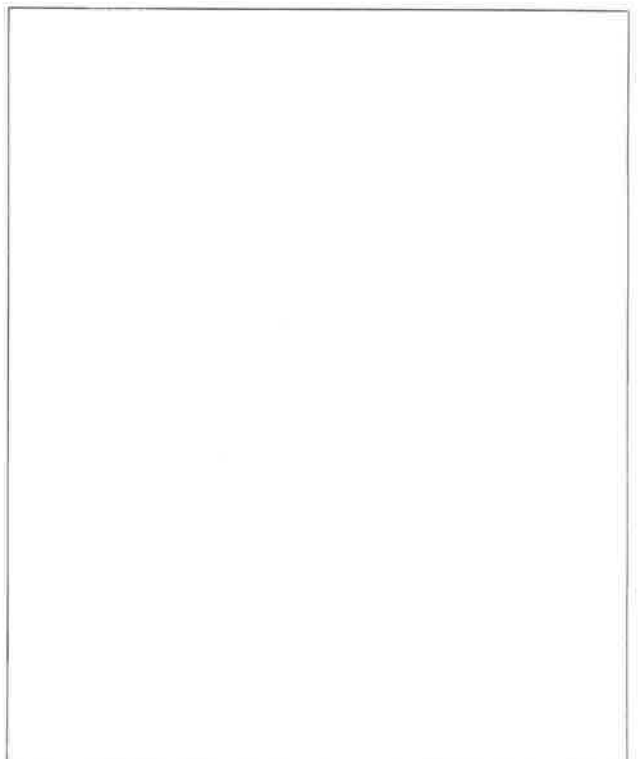
**No. 11A Dress**  
Worn also by Officers. Blue Dulliner worn by technicians.



**Spare**



**Spare**



**Spare**